

[BIOSWOT-Med]: SPASSO Images Analysis

L. Rousselet, A.M. Doglioli

April 1, 2023

Executive Summary

Type here your executive summary

1 Ongoing operations and upcoming stations

SWOT passing time (UTC) over:

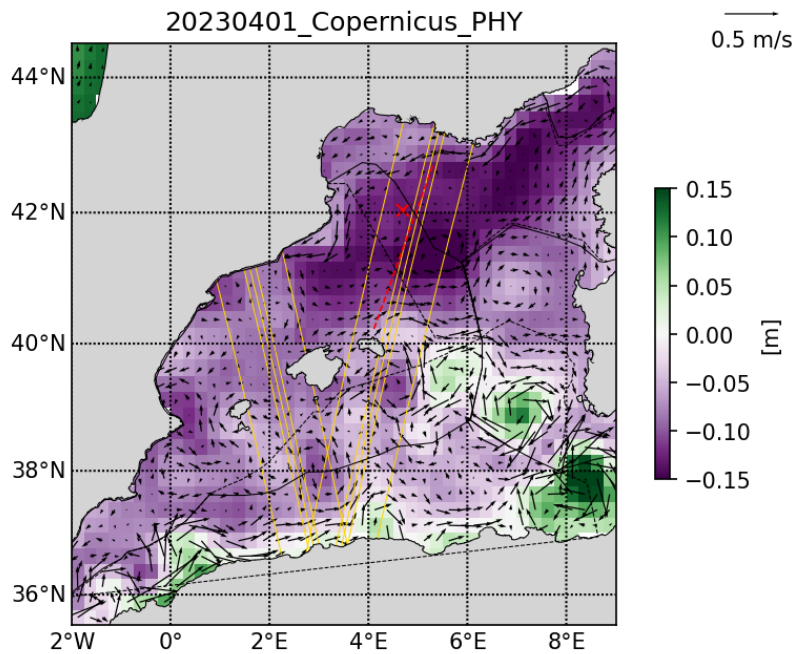
43°N - 5°E Asc 42.7°N - 4.8°E Asc
:----- :-----
2023-04-01 23:44:38 2023-04-01 23:44:38
2023-04-02 23:35:15 2023-04-02 23:35:15
2023-04-03 23:25:53 2023-04-03 23:25:53
2023-04-04 23:16:30 2023-04-04 23:16:30
2023-04-05 23:07:08 2023-04-05 23:07:08

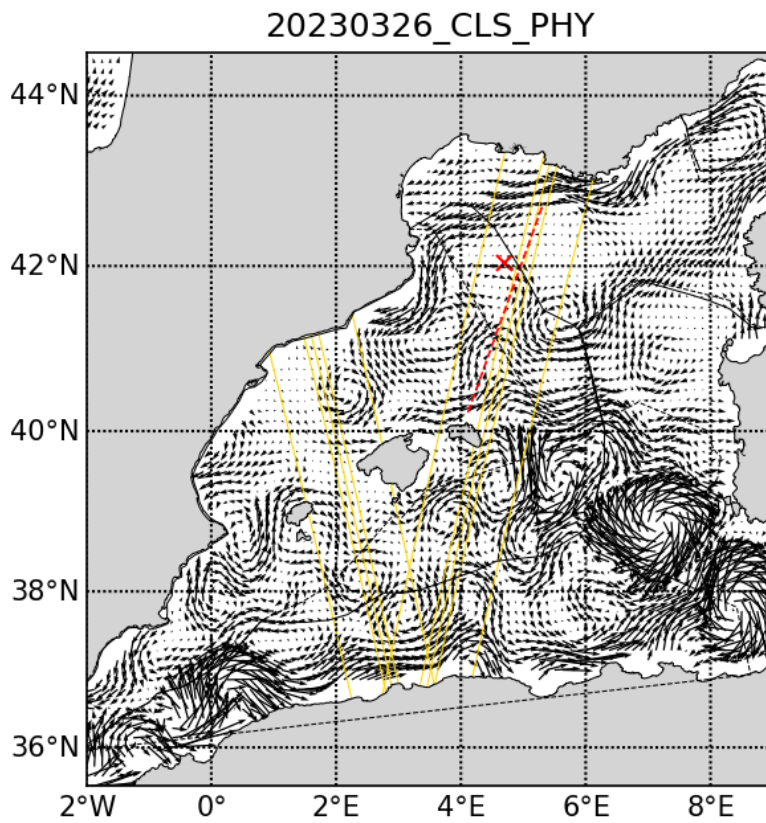
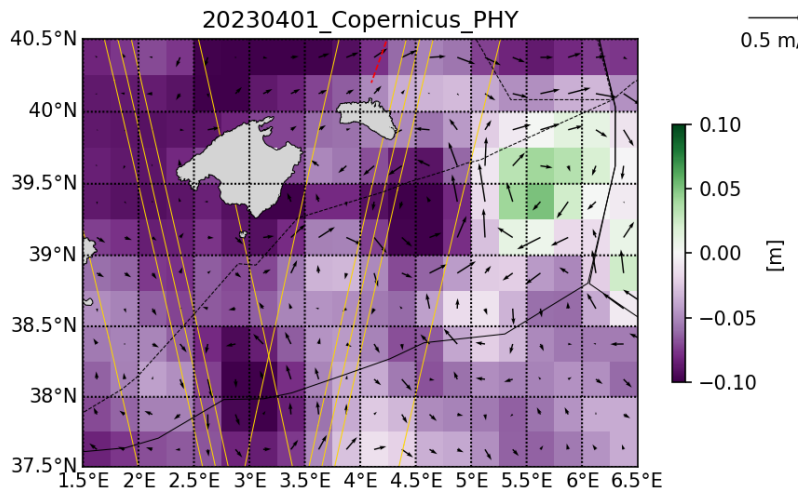
Type here.

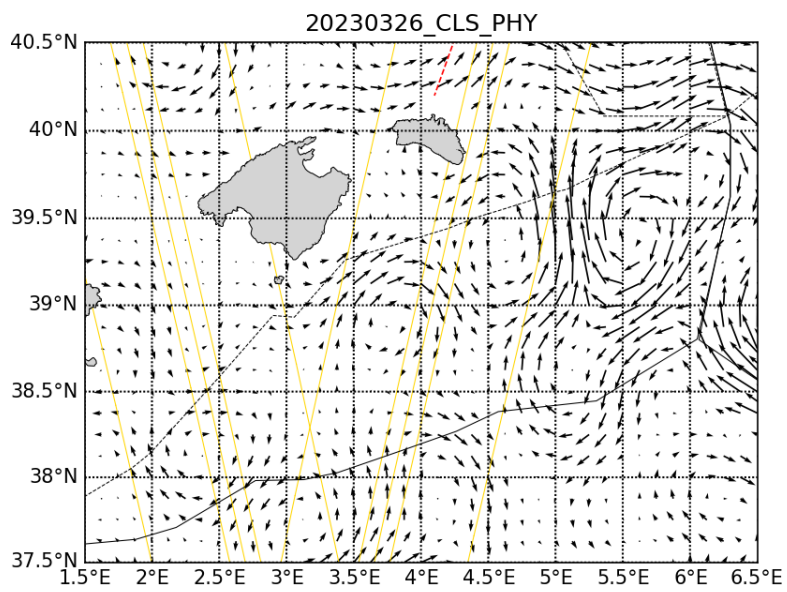
2 Daily figures analysis

2.1 Altimetry, derived currents

Type here.

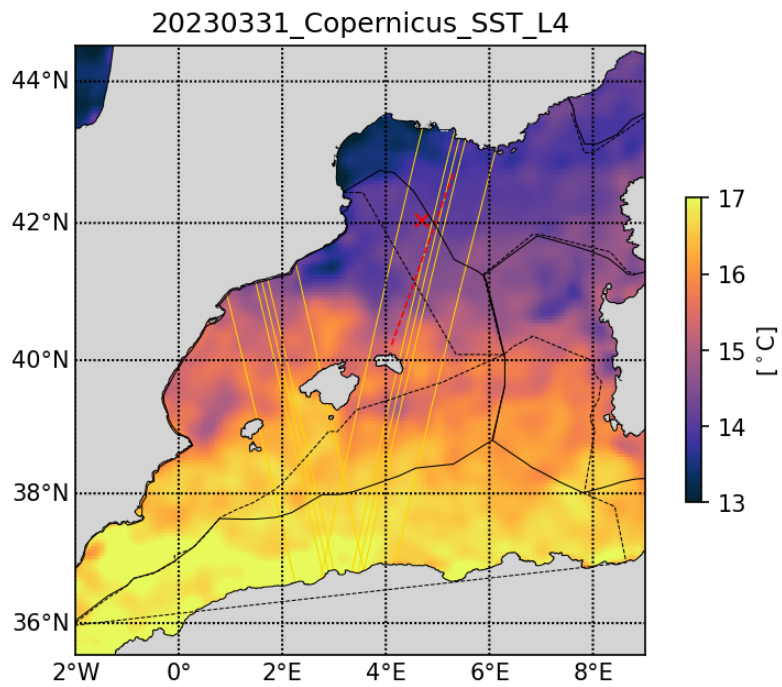
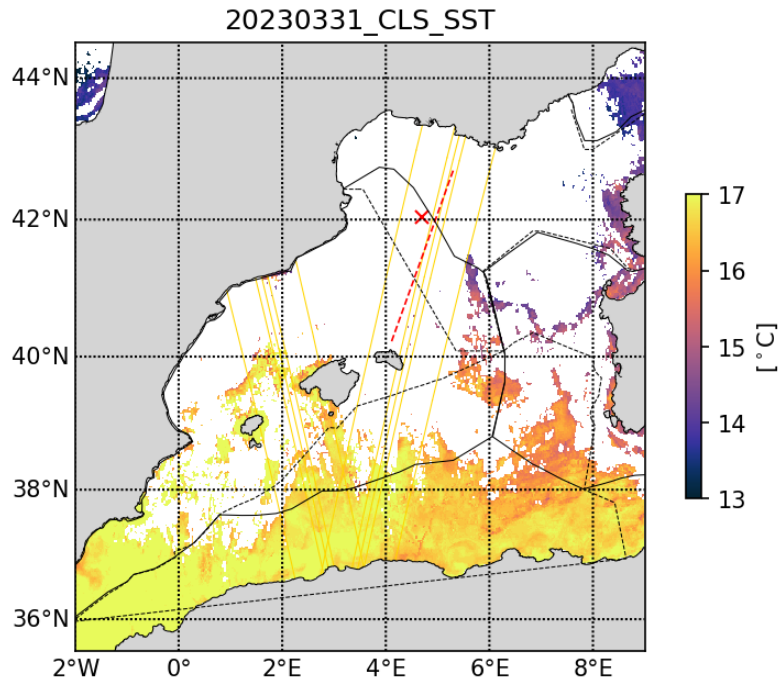


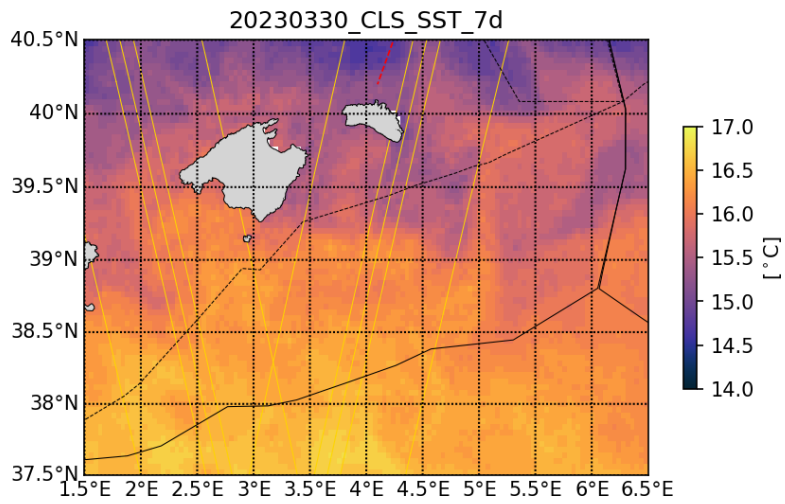
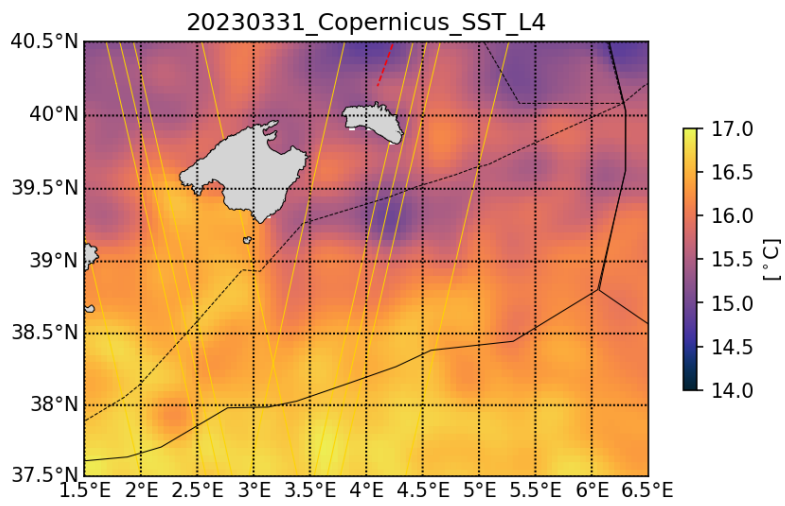
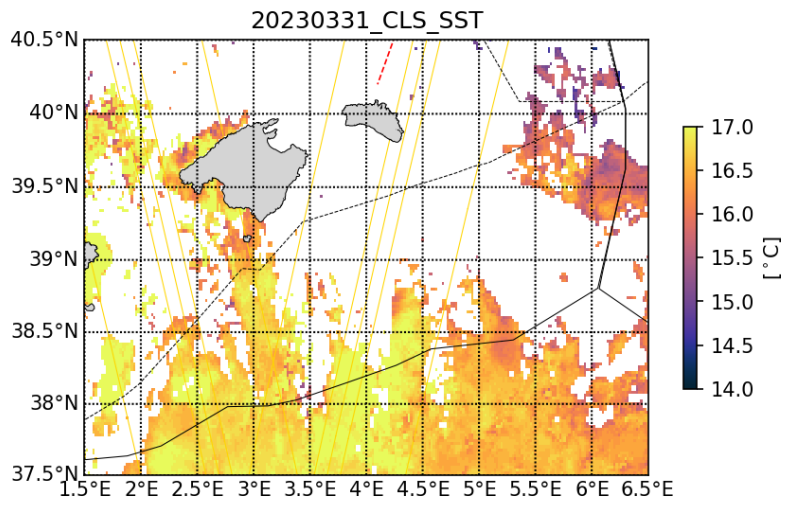




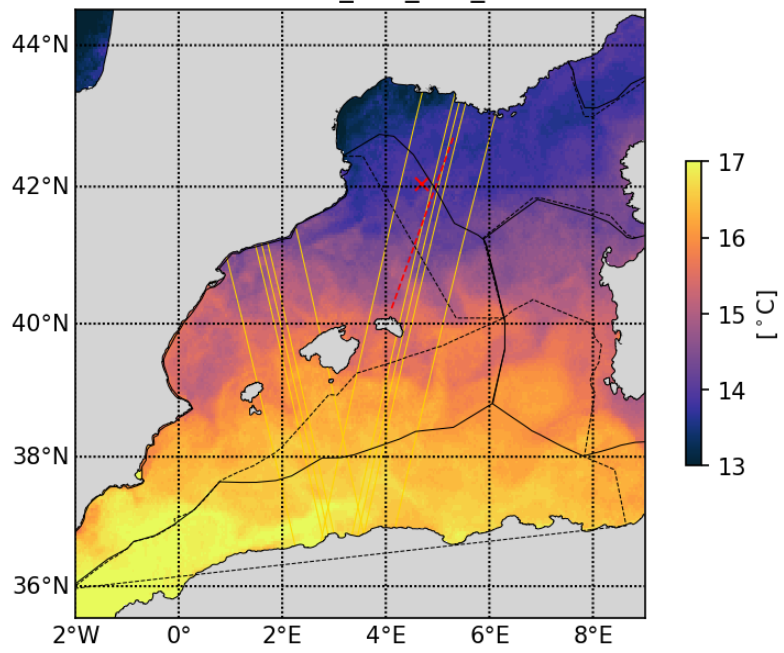
2.2 SST analysis

Type here.



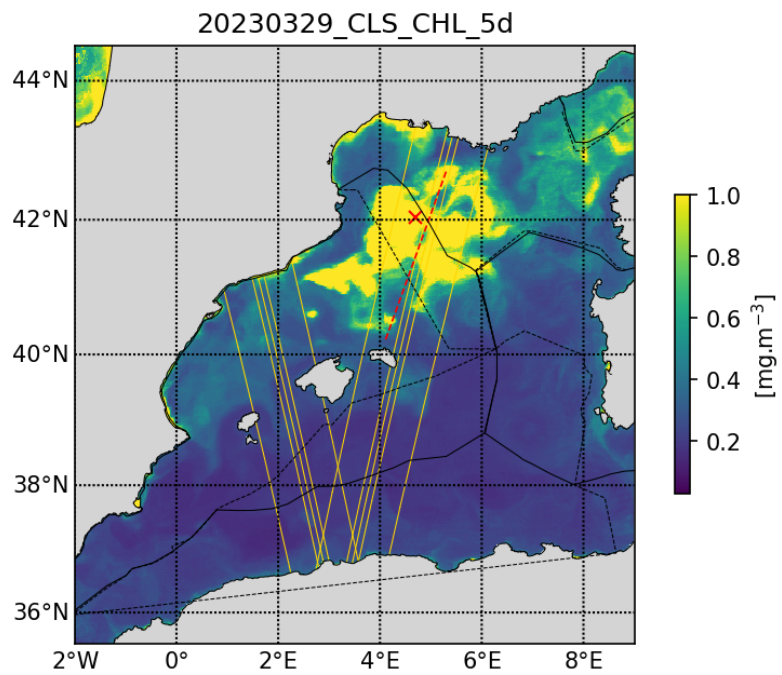
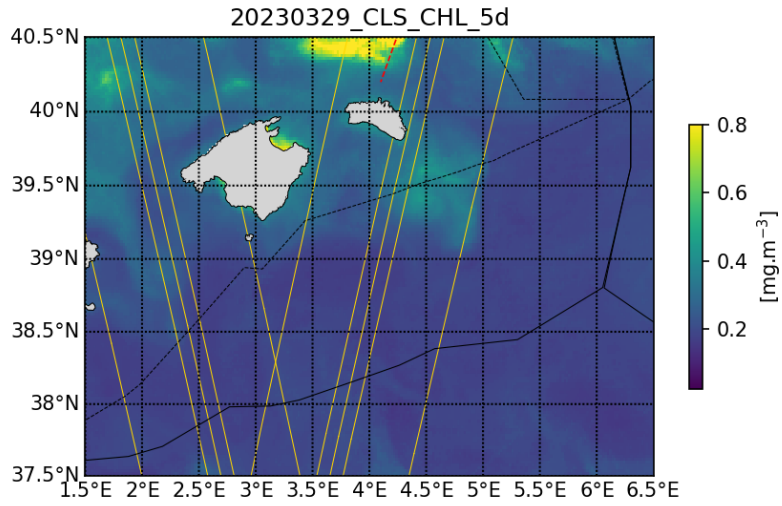


20230330_CLS_SST_7d

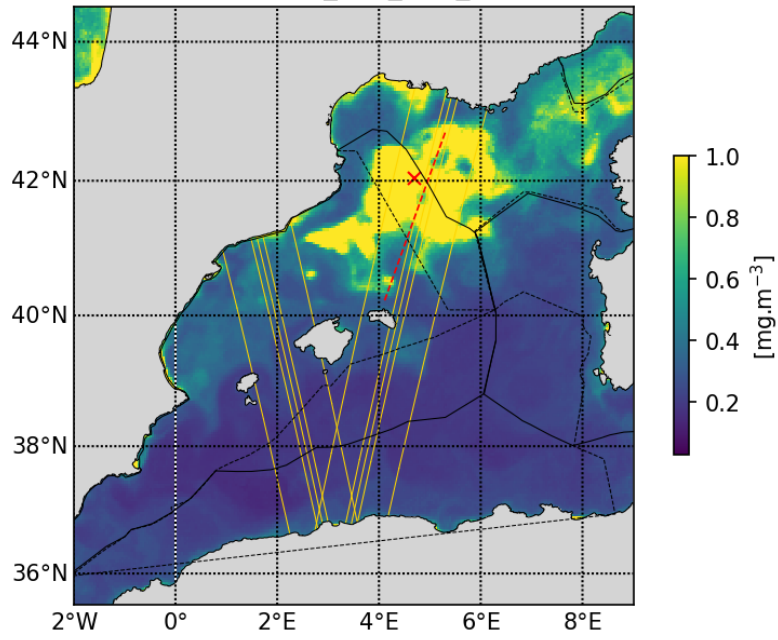


2.3 Chlorophyll analysis

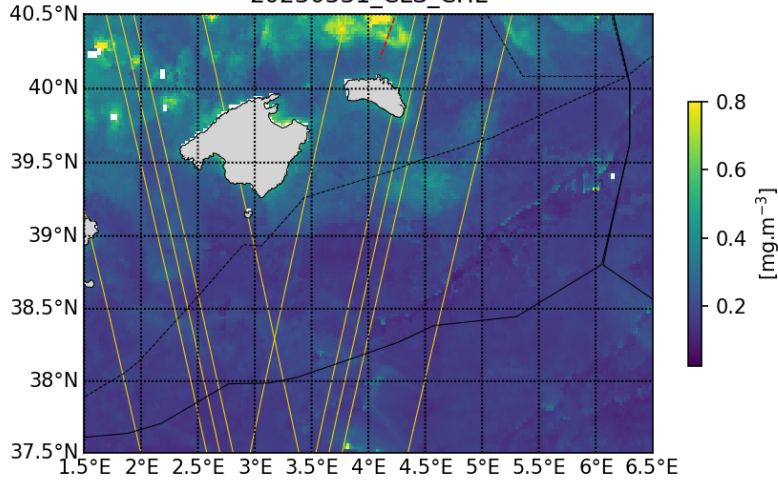
Type here.



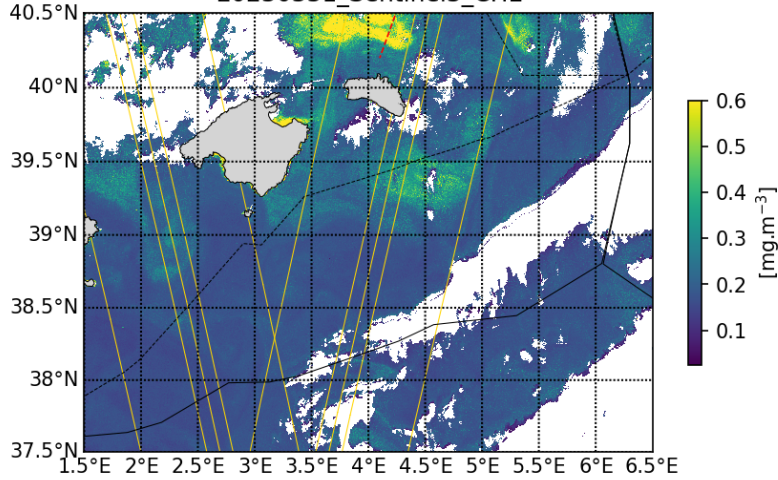
20230331_CLS_CHL_10d

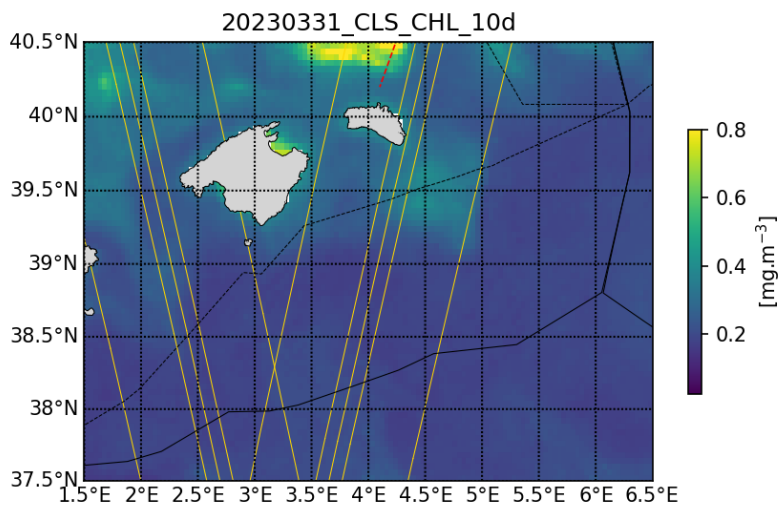
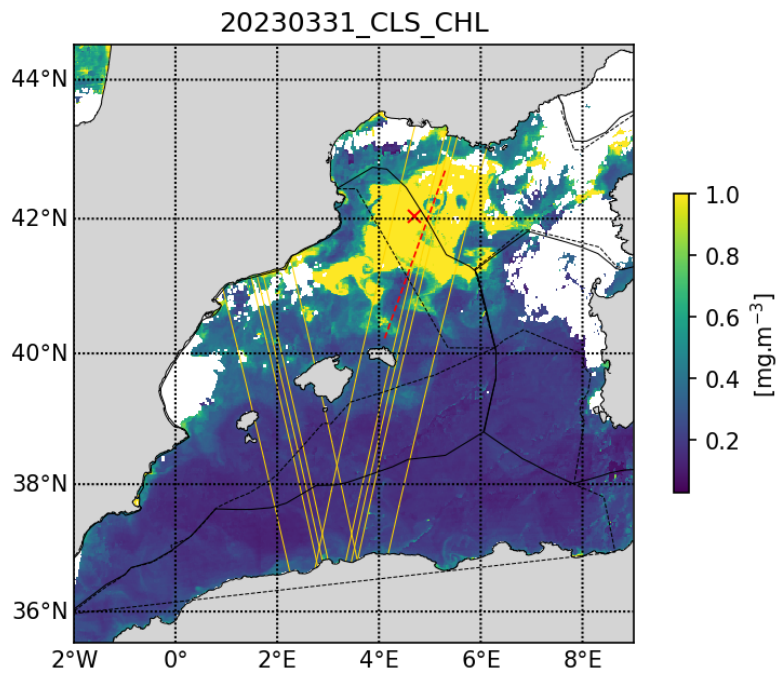


20230331_CLS_CHL

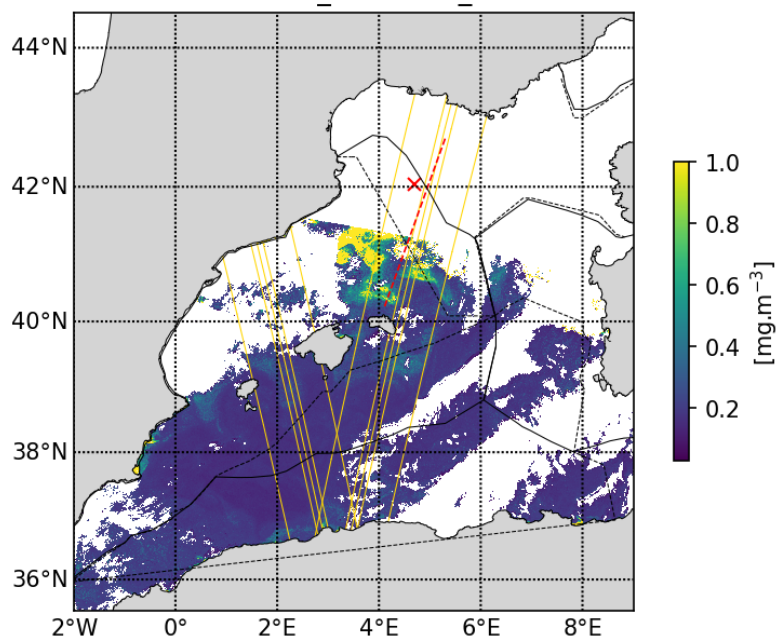


20230331_Sentinel3_CHL





20230331_Sentinel3_CHL



2.4 Eulerian/Lagrangian analysis

Eulerian diagnostics computed with Copernicus_PHY velocities:

KE: kinetic energy

OW: Okubo-Weiss parameter

Lagrangian diagnostics computed by seeding Lagrangian particles every 0.02deg and advected for 30 days backward in time with Copernicus_PHY velocities:

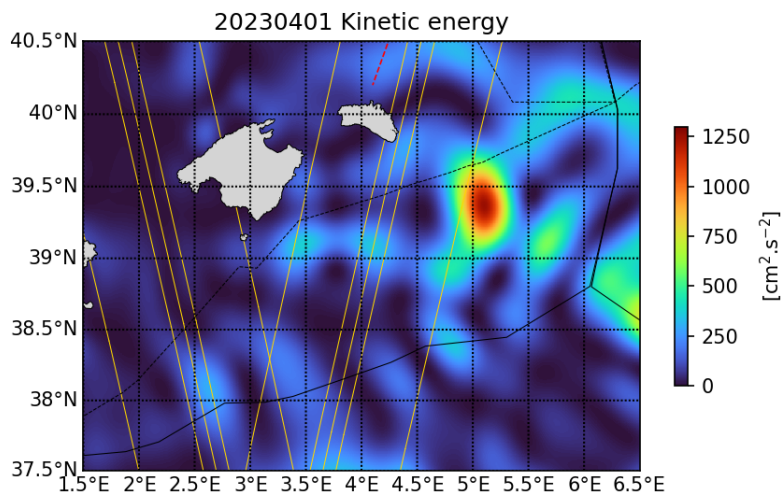
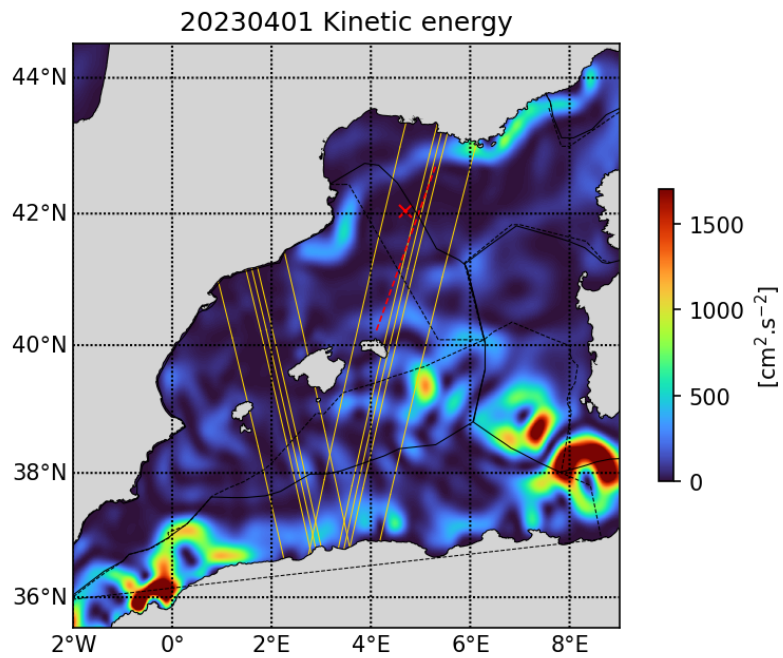
FTLE: finite time Lyapunov exponents (convergent fronts detection)

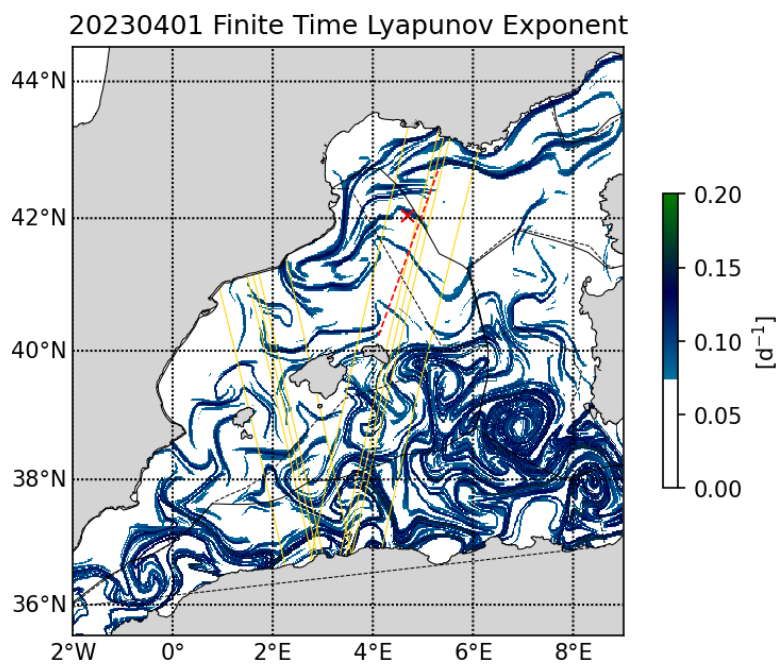
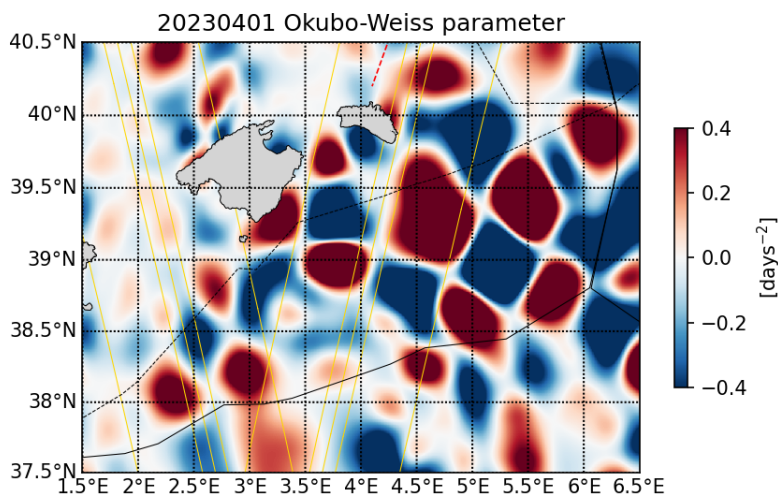
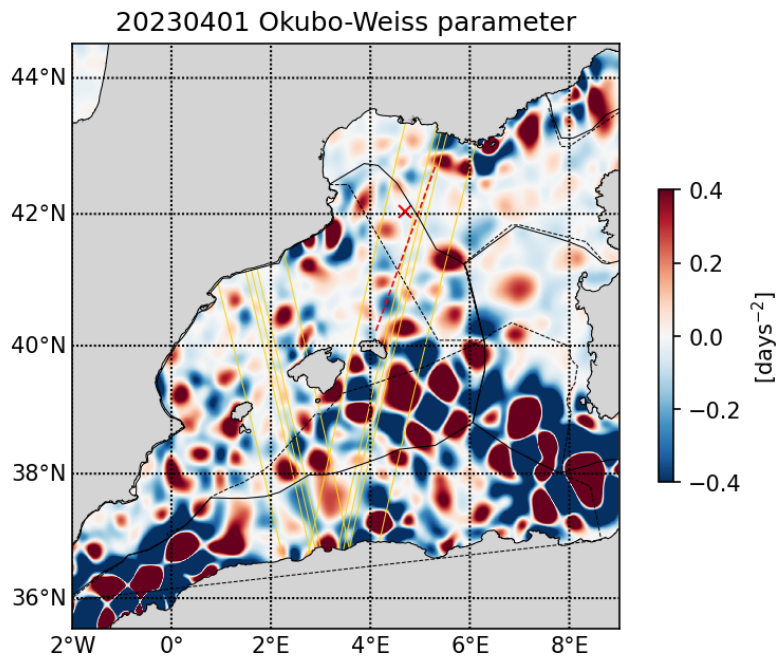
LLADV: longitude and latitude advection

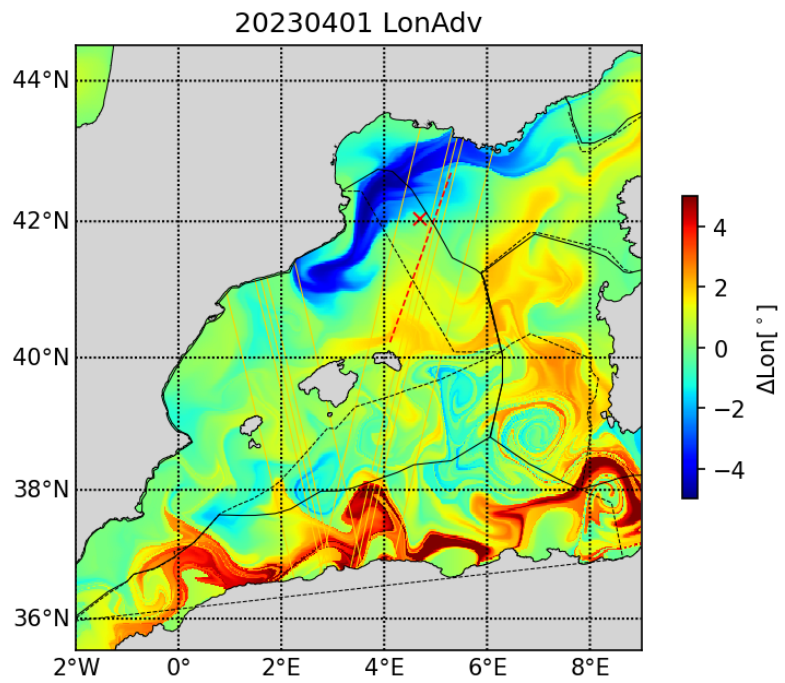
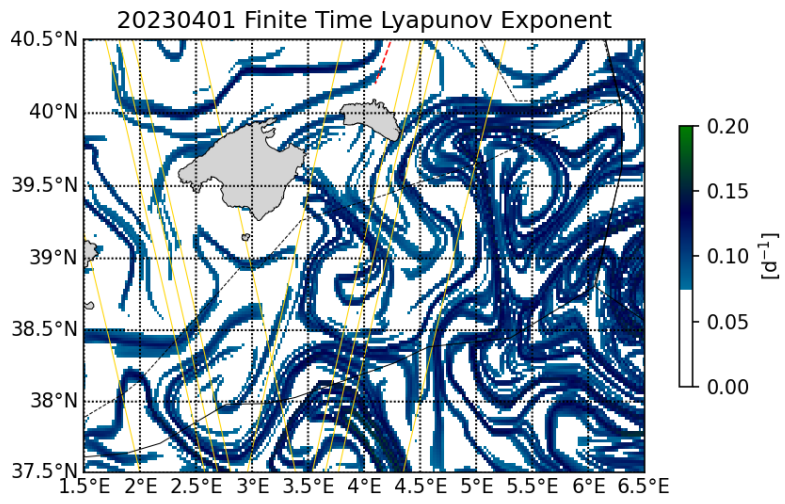
Retention parameter (based on computing the okubo Weiss parameter along a particle trajectory): Detect trapping structures (colorbar = days water parcels have a positive vorticity)

Timefrombathy: Water age since last contact with isobath XXm (precised in figure title)

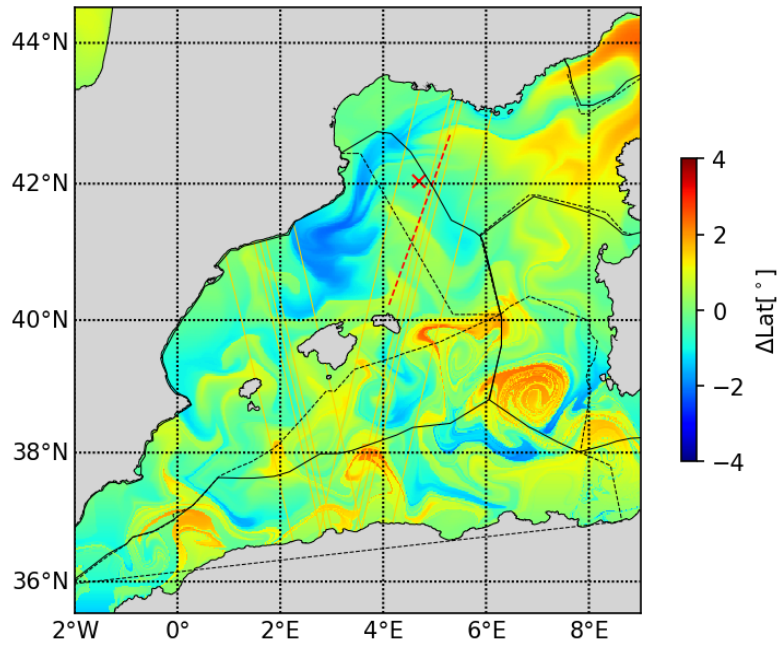
More details available at: <https://www.swot-adac.org/resources/swot-adac-products-access/>



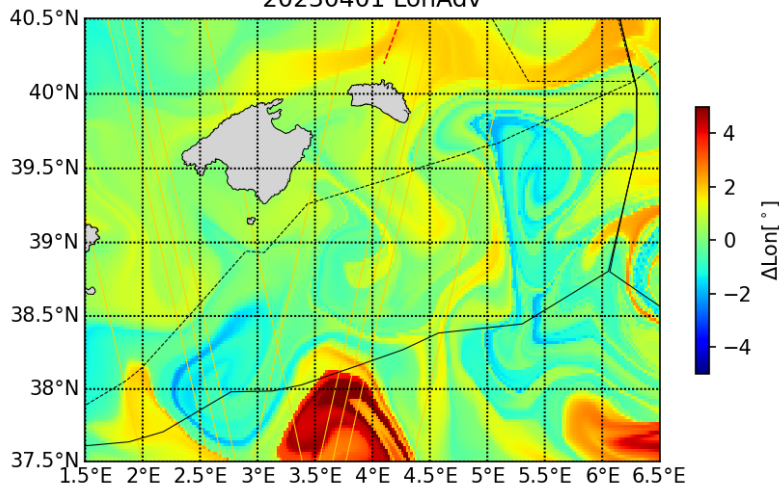




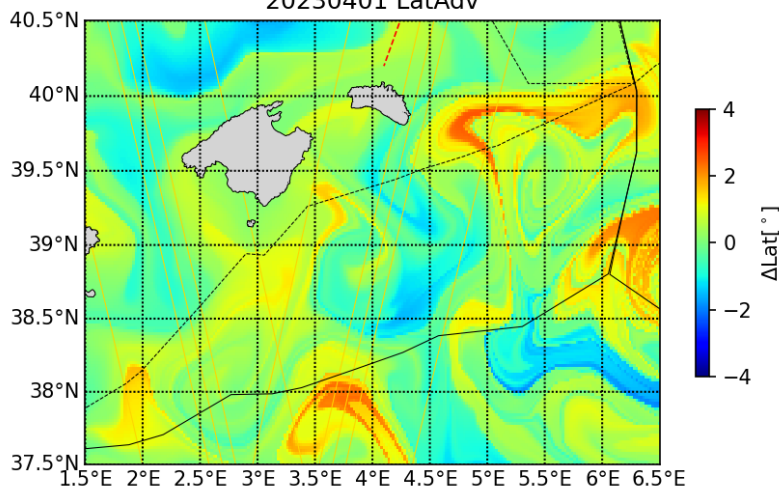
20230401 LatAdv



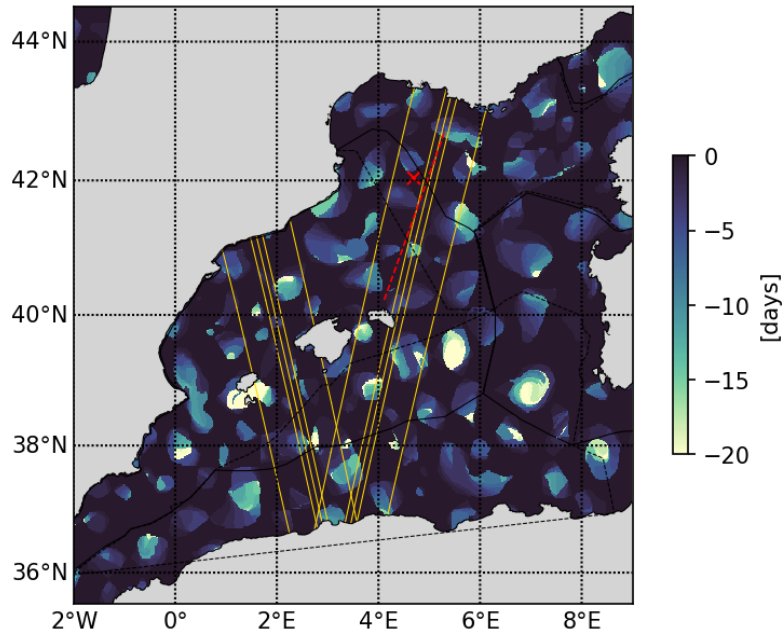
20230401 LonAdv



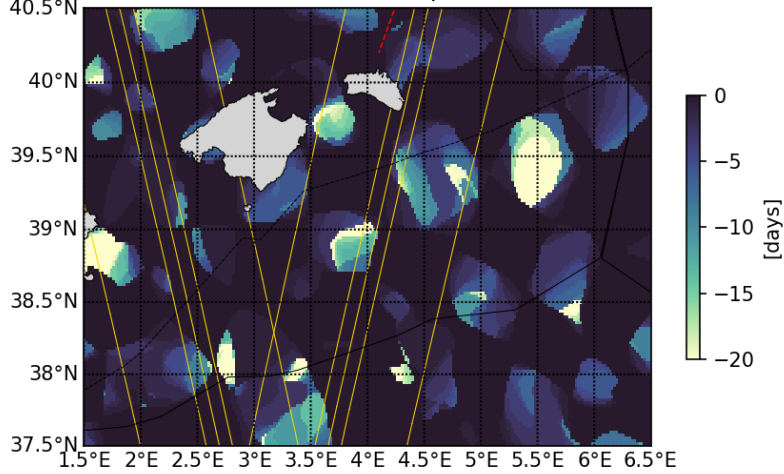
20230401 LatAdv



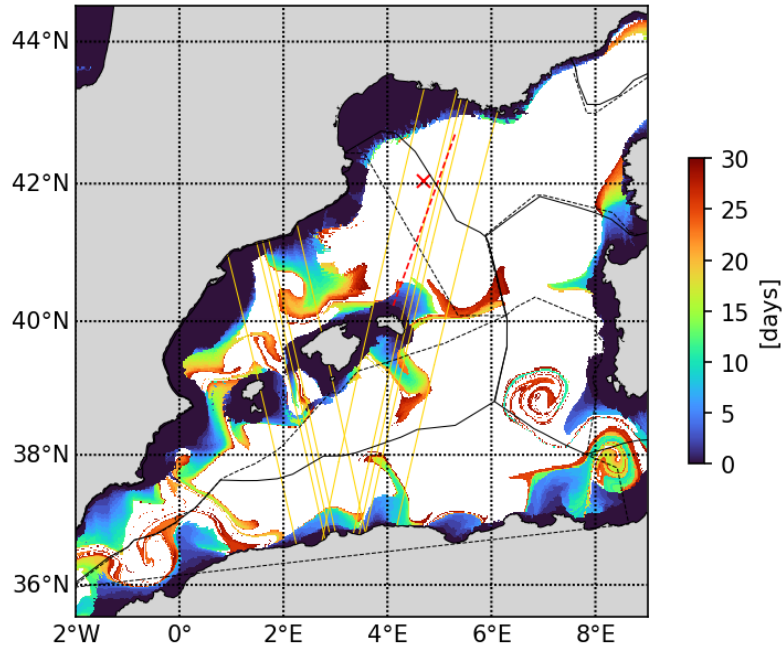
20230401 Retention parameter



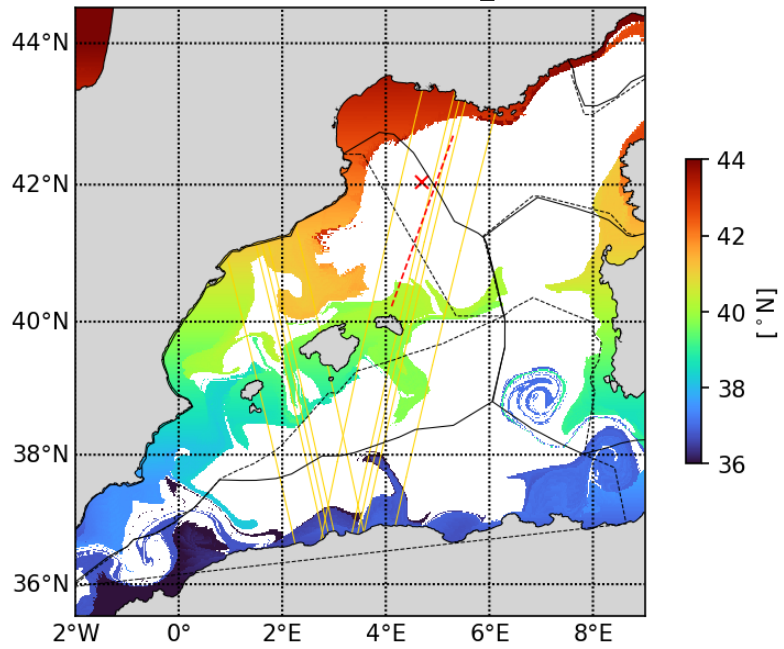
20230401 Retention parameter



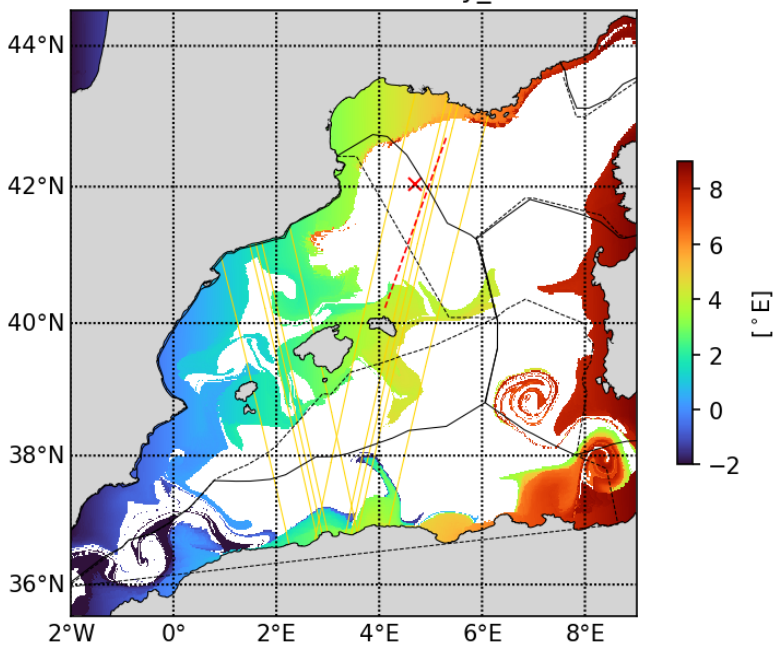
20230401 Timefrombathy_500m



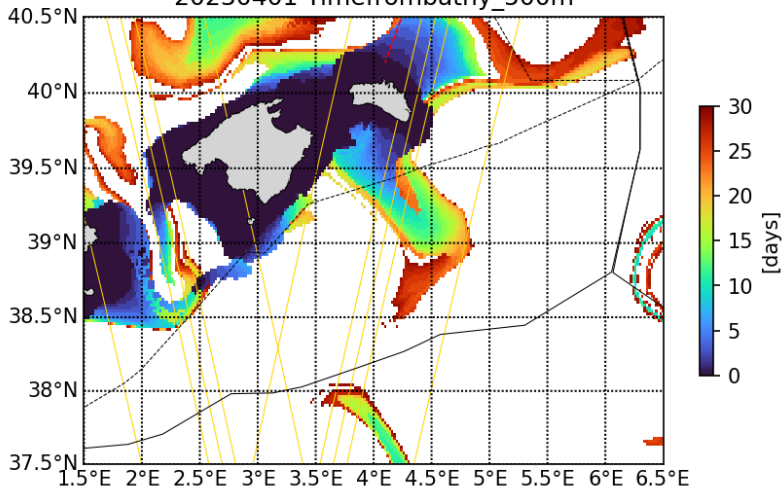
20230401 Latfrombathy_500m



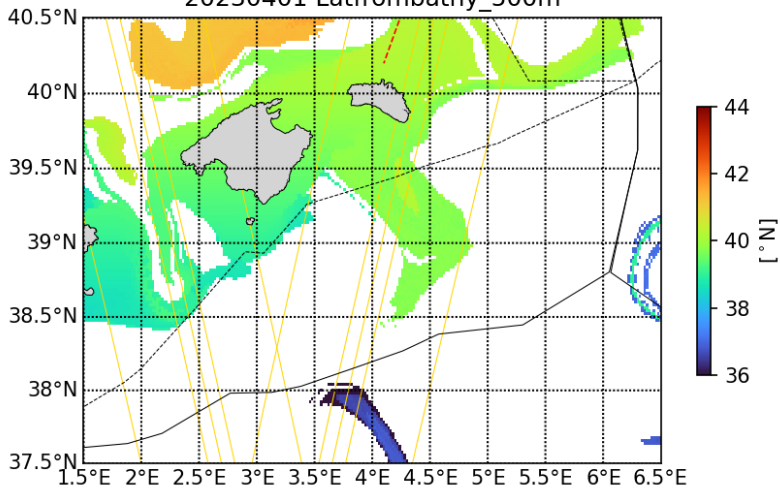
20230401 Lonfrombathy_500m

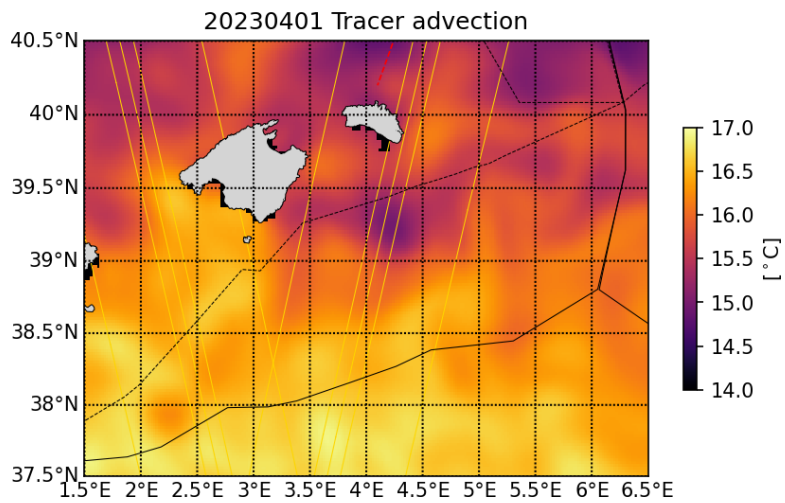
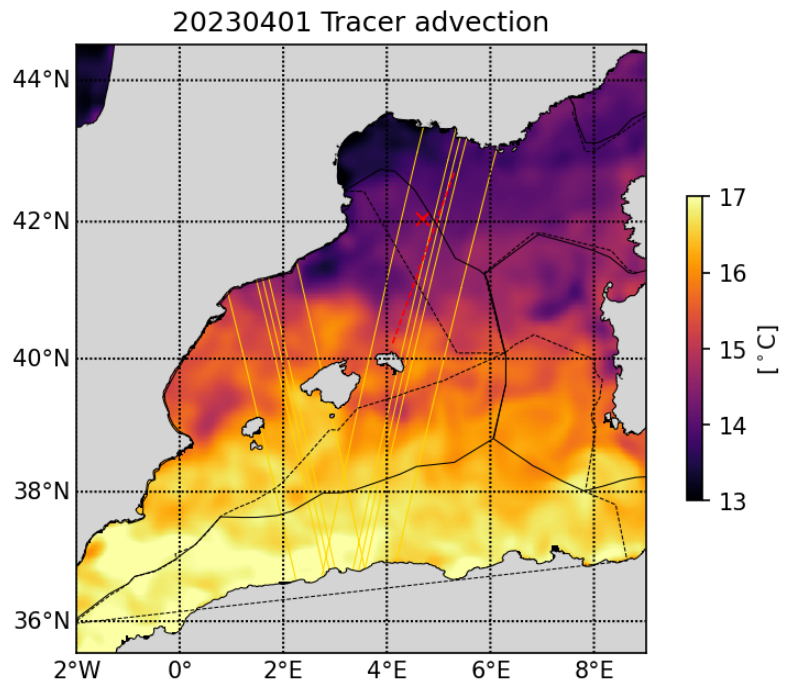
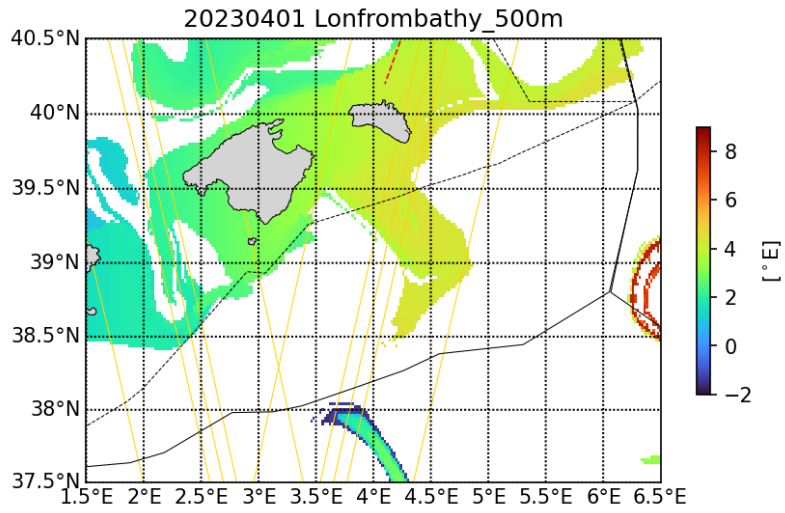


20230401 Timefrombathy_500m



20230401 Latfrombathy_500m





2.5 Other analysis

Type here.

Acknowledgments

Example:

The altimetry data are the AVISO Mediterranean regional product: <http://www.aviso.altimetry.fr/index.php?id=1275>. The derived currents are processed by SPASSO to derive Eulerian and Lagrangian diagnostics of ocean circulation: OkuboWeiss parameter, particle retention time and advection, Lagrangian Coherent Structures. CLS provided the SST and surface CHL concentration composite products. Sea surface temperature (level 3 and 4, 1 km resolution) and chlorophyll concentration (level 3, 1km resolution, MODISAqua and NPPVIIRS sensors combined (after May 27, 2017) into a new product called MULTI) have been provided by CMEMS Copernicus Marine Environment Monitoring Service (<http://marine.copernicus.eu>). Another SST product (level 4, composite, 1 km resolution) is provided by the Jet Propulsion Laboratory (JPL), Pasadena, CA. SPASSO is operated with the support of the SIP (Service Informatique de Pythéas) and in particular C. Yohia, J. Lecubin. D. Zevaco and C. Blanpain (Institut Pythéas, Marseille, France).