

# [BIOSWOT-Med]: SPASSO Images Analysis

L. Rousselet, A.M. Doglioli

March 8, 2023

\*\*\*\*\*

## Executive Summary

Type here your executive summary

\*\*\*\*\*

## 1 Ongoing operations and upcoming stations

SWOT passing time (UTC) over:

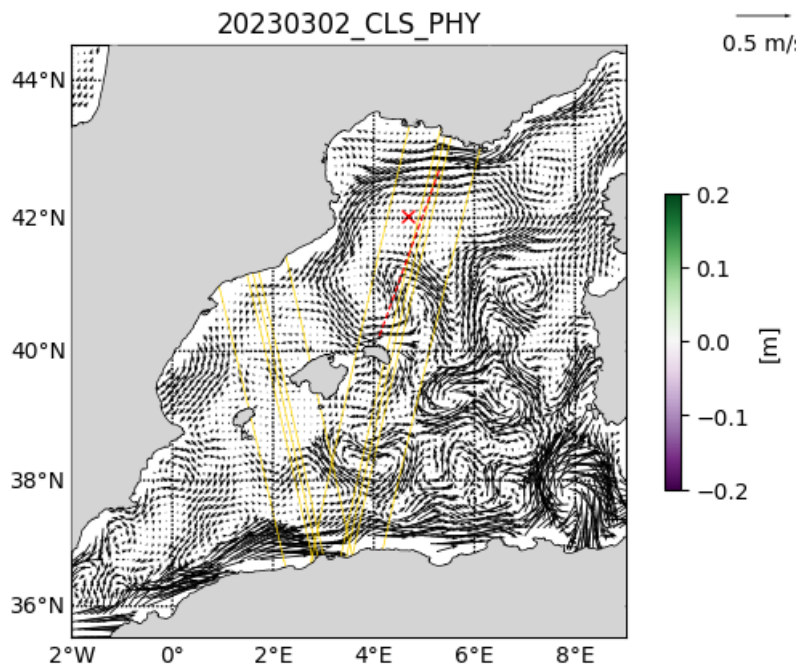
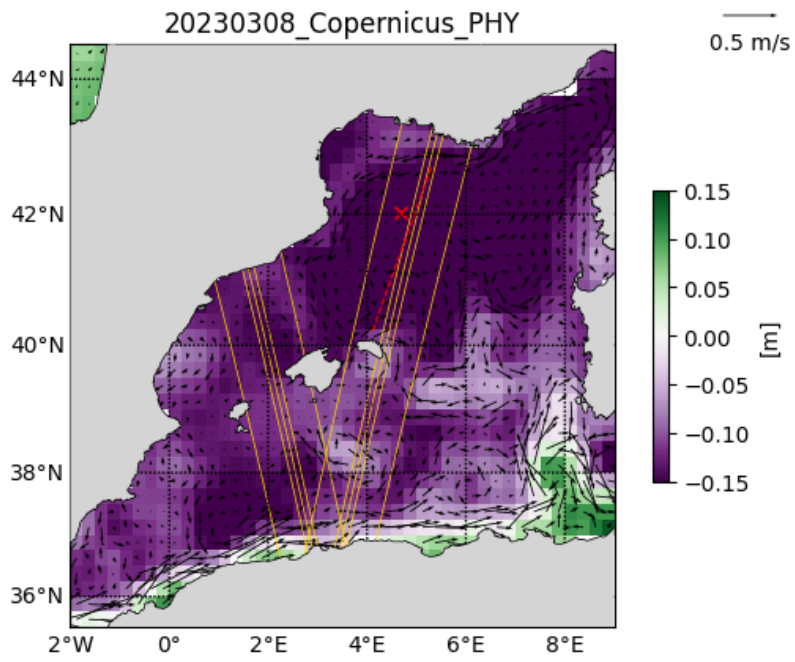
43°N - 5°E Asc   42.7°N - 4.8°E Asc
:----- :-----
2023-03-08 03:38:59   2023-03-08 03:38:59
2023-03-09 03:29:37   2023-03-09 03:29:37
2023-03-10 03:20:14   2023-03-10 03:20:14

Type here.

## 2 Daily figures analysis

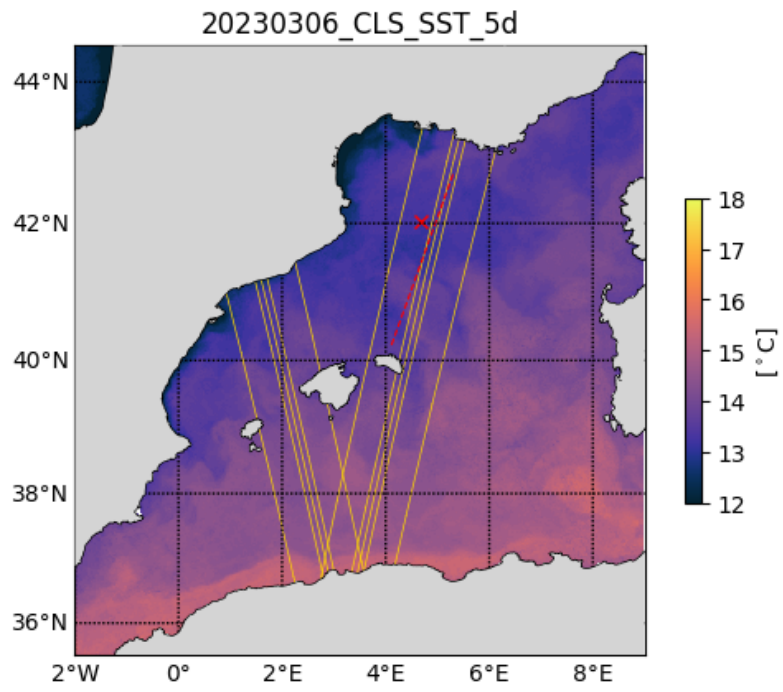
### 2.1 Altimetry, derived currents

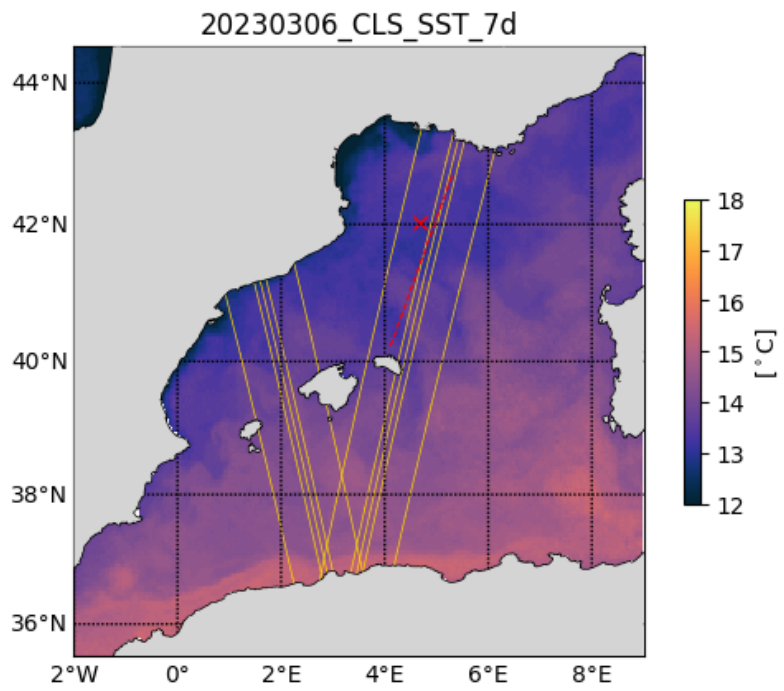
Type here.



## 2.2 SST analysis

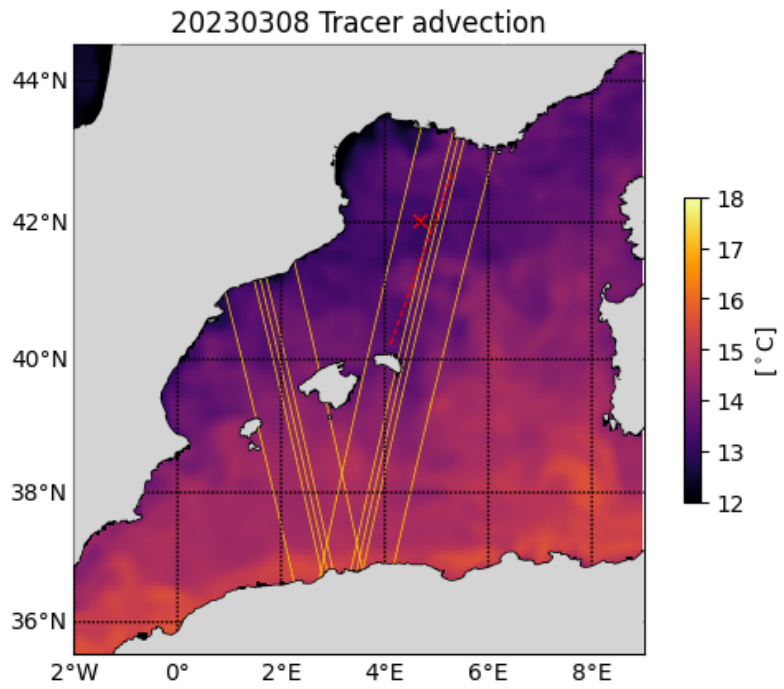
Type here.





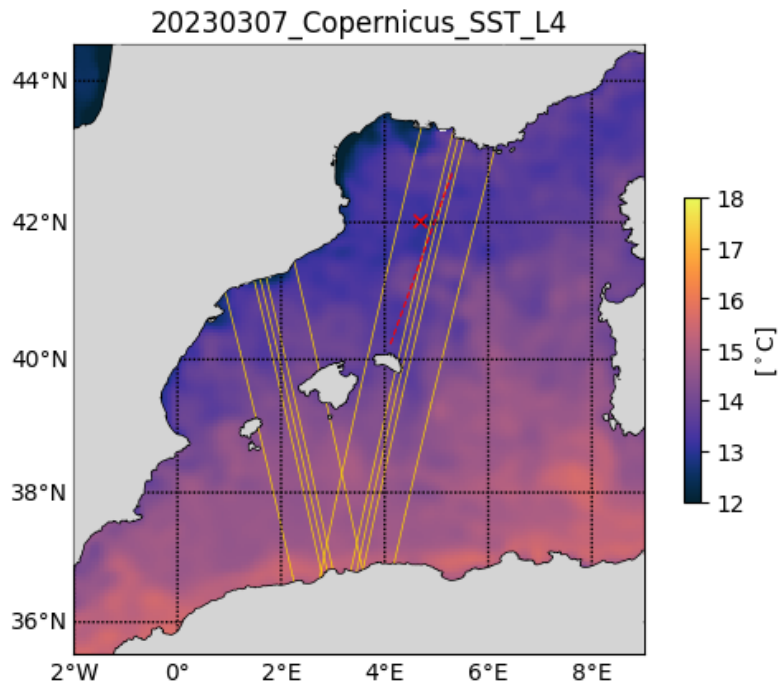
### 2.3 Chlorophyll analysis

Type here.



## 2.4 Eulerian/Lagrangian analysis

Type here.



## 2.5 Other analysis

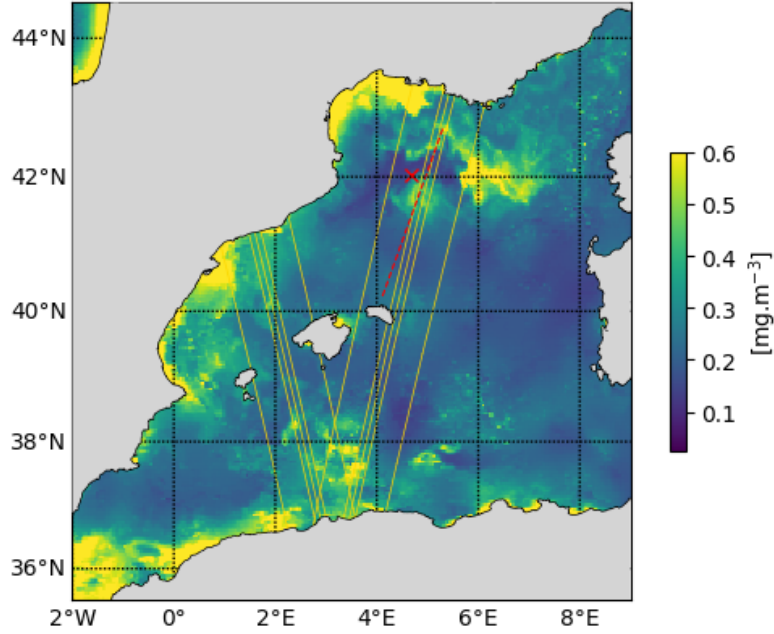
Type here.

### Acknowledgments

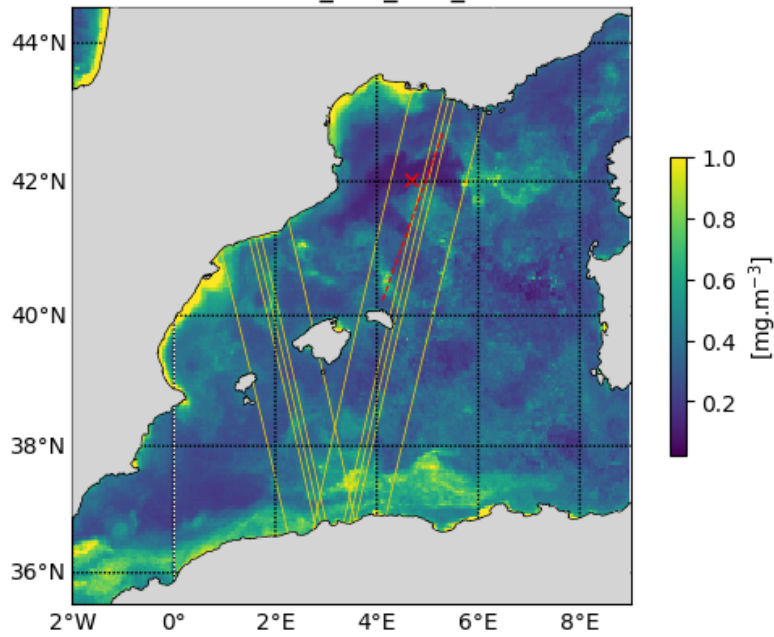
Example:

The altimetry data are the AVISO Mediterranean regional product: <http://www.aviso.altimetry.fr/index.php?id=1>. The derived currents are processed by SPASSO to derive Eulerian and Lagrangian diagnostics of ocean circulation: OkuboWeiss parameter, particle retention time and advection, Lagrangian Coherent Structures. CLS provided the SST and surface CHL concentration composite products. Sea surface temperature (level 3 and 4, 1 km resolution) and chlorophyll concentration (level 3, 1km resolution, MODISAqua and NPPVIIRS sensors combined (after May 27, 2017) into a new product called MULTI) have been provided by CMEMS Copernicus Marine Environment Monitoring Service (<http://marine.copernicus.eu>). Another SST product (level 4, composite, 1 km resolution) is provided by the Jet Propulsion Laboratory (JPL), Pasadena, CA.

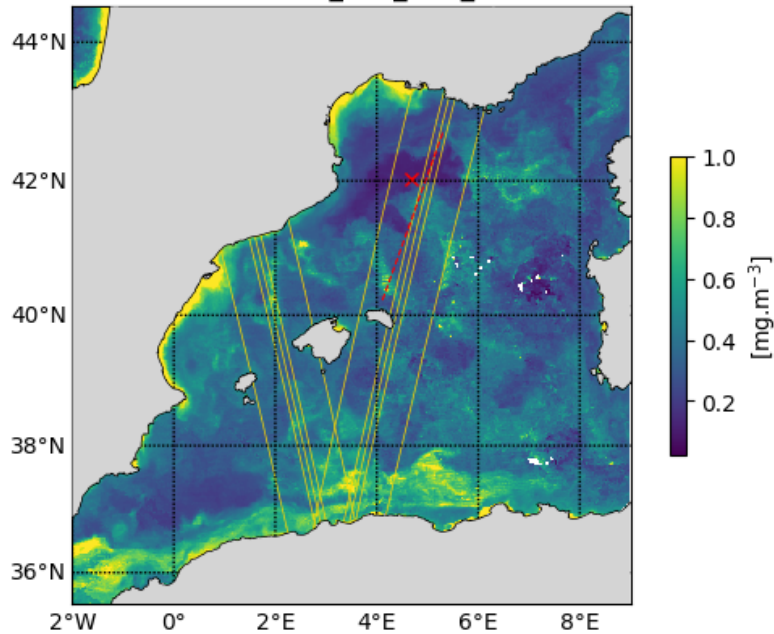
20230306\_Copernicus\_CHL\_L4



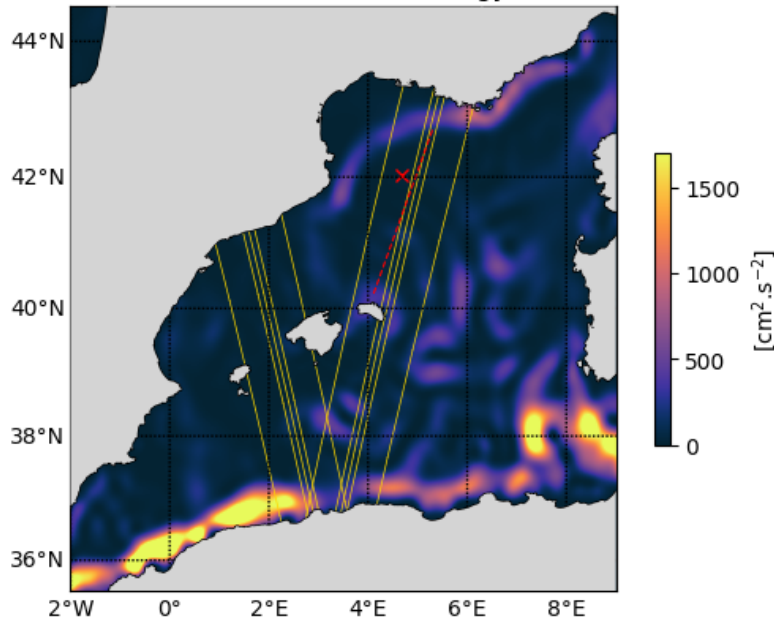
20230307\_CLS\_CHL\_10d



20230305\_CLS\_CHL\_5d

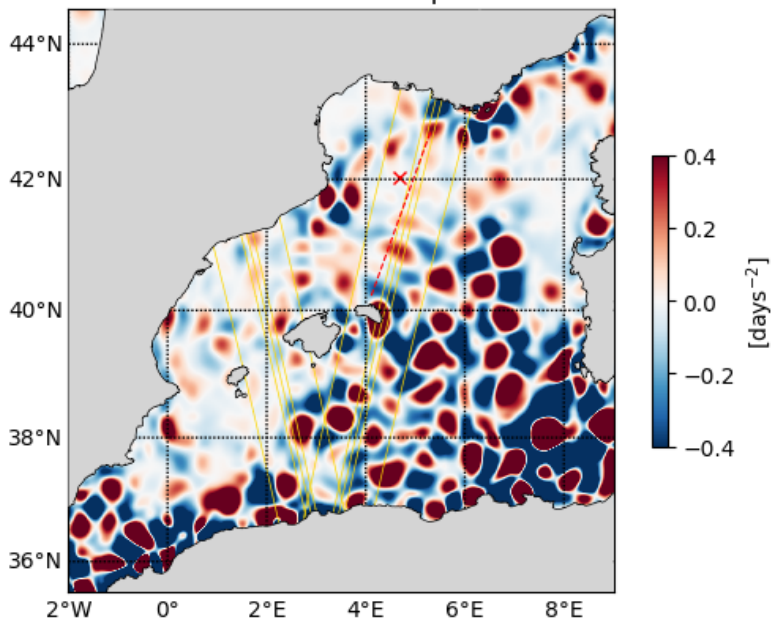


20230308 Kinetic energy

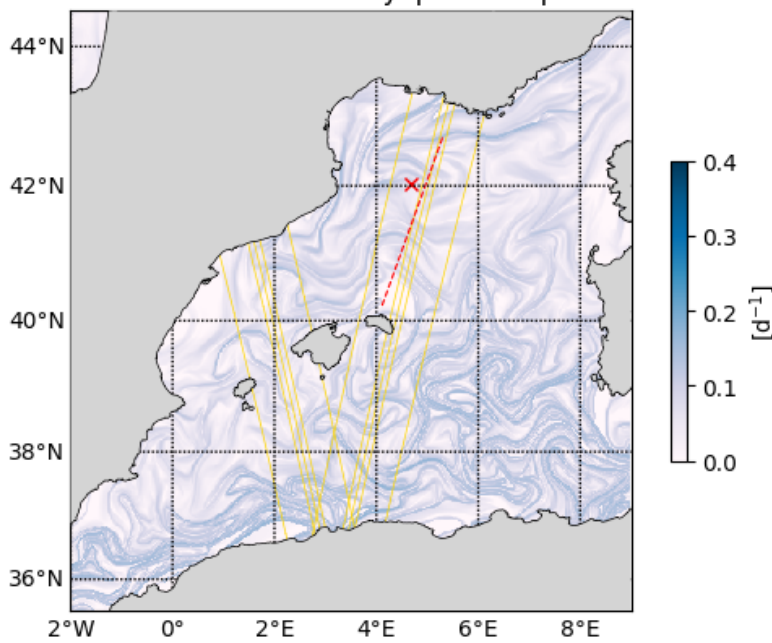




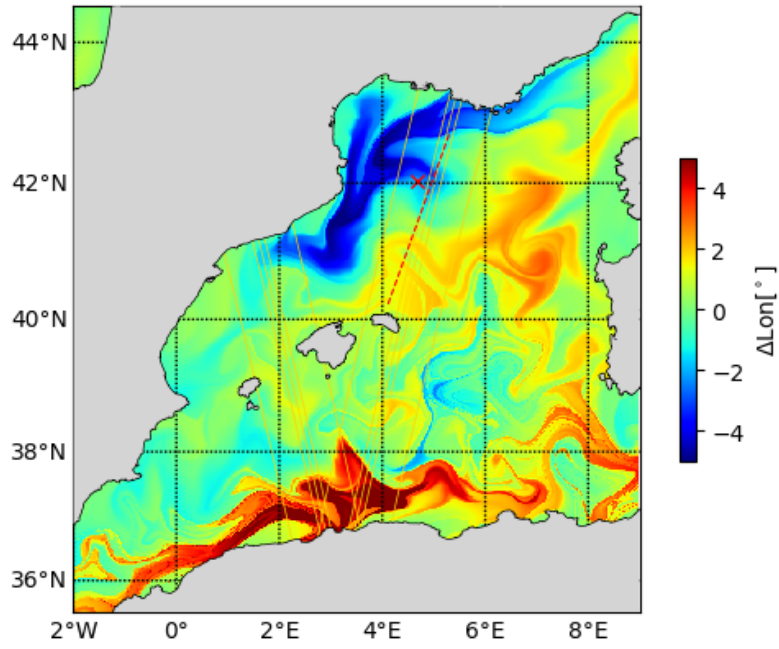
20230308 Okubo-Weiss parameter



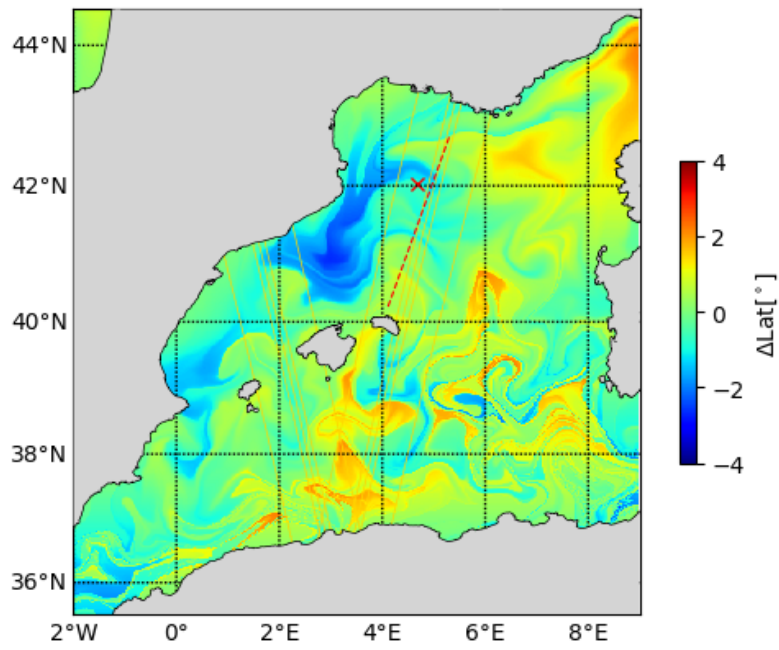
20230308 Finite Time Lyapunov Exponent



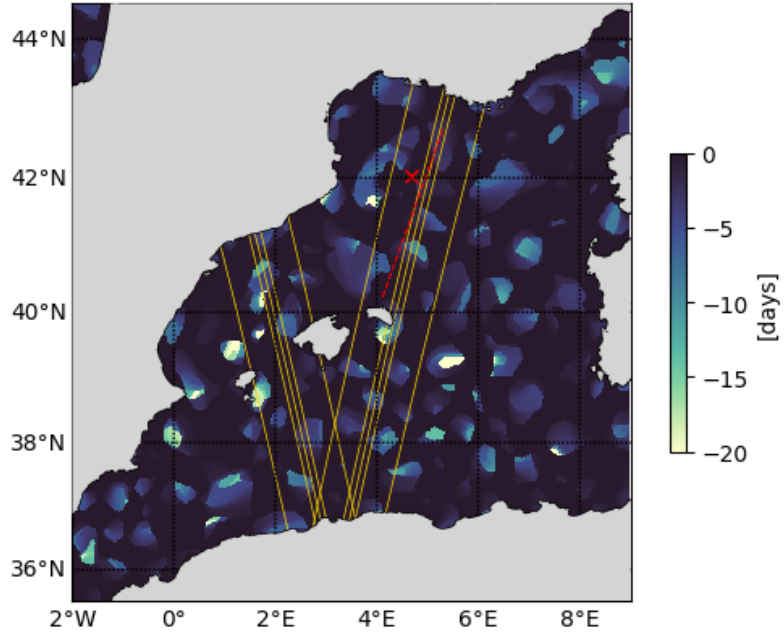
20230308 LonAdv



20230308 LatAdv



20230308 Retention parameter



20230308 Tracer advection

