

# [BIOSWOT-Med]: SPASSO Images Analysis

L. Rousselet, A.M. Doglioli

March 5, 2023

\*\*\*\*\*

## Executive Summary

Type here your executive summary

\*\*\*\*\*

## 1 Ongoing operations and upcoming stations

SWOT passing time (UTC) over:

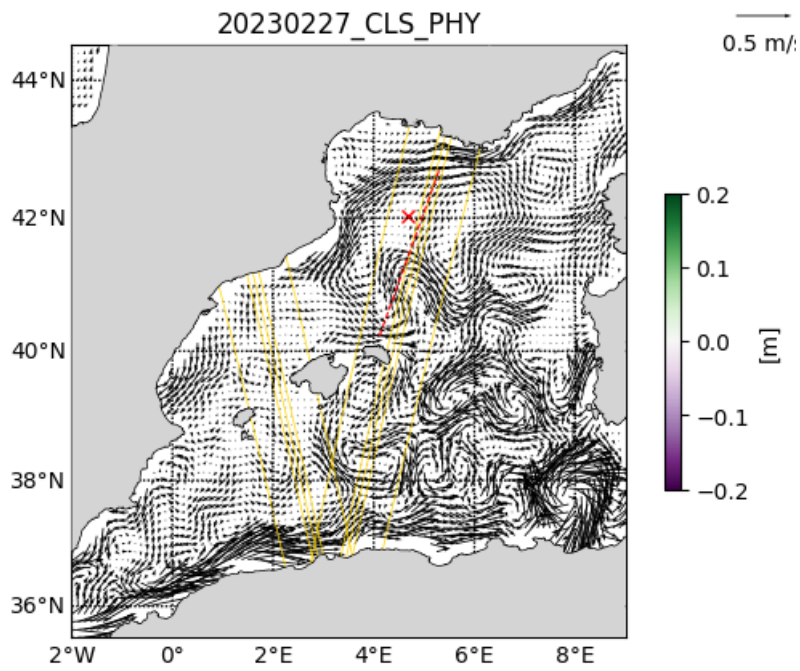
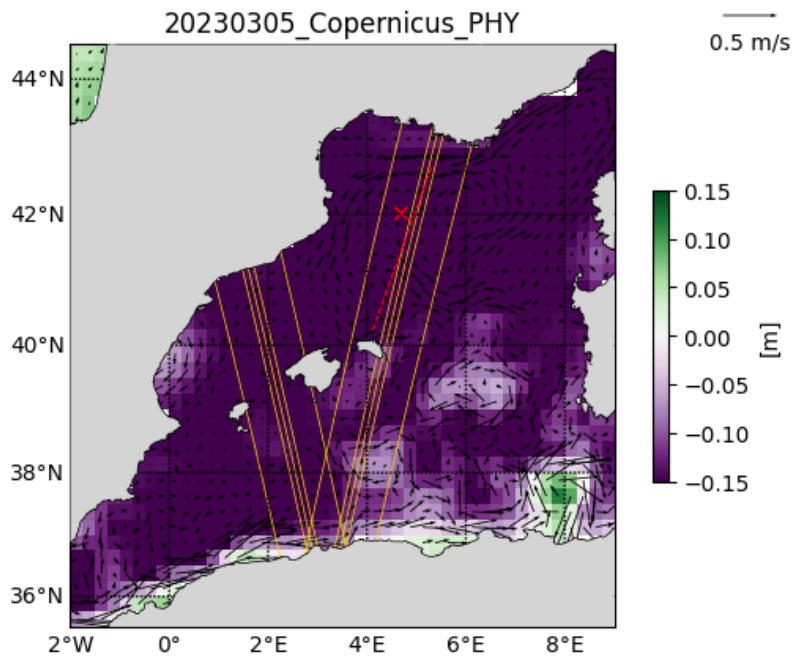
43°N - 5°E Asc   42.7°N - 4.8°E Asc
:----- :-----
2023-03-05 04:07:07   2023-03-05 04:07:07
2023-03-06 03:57:44   2023-03-06 03:57:44
2023-03-07 03:48:22   2023-03-07 03:48:22

Type here.

## 2 Daily figures analysis

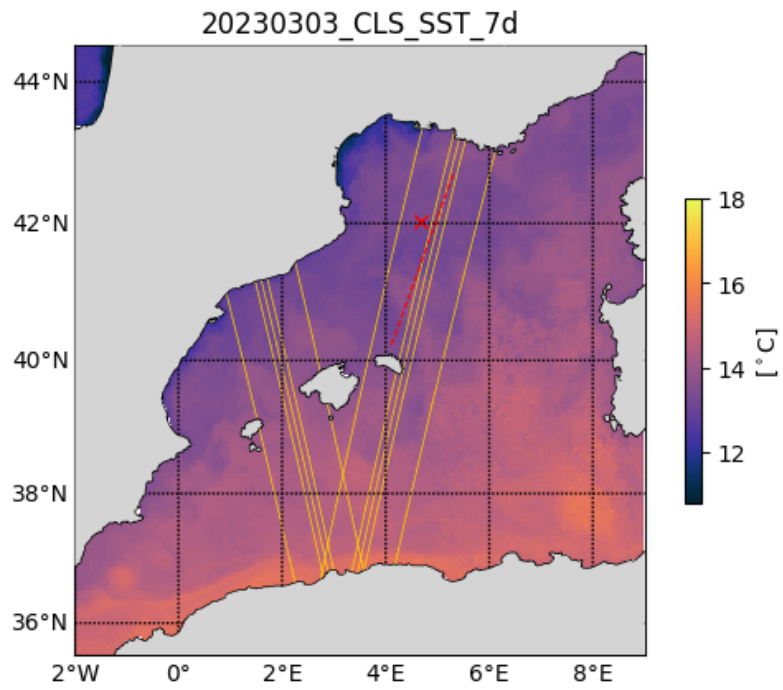
### 2.1 Altimetry, derived currents

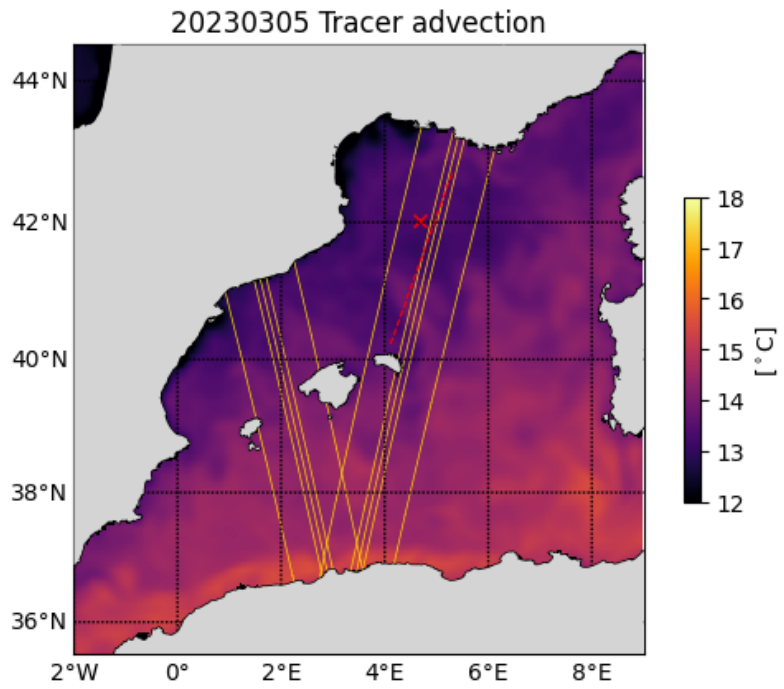
Type here.



## 2.2 SST analysis

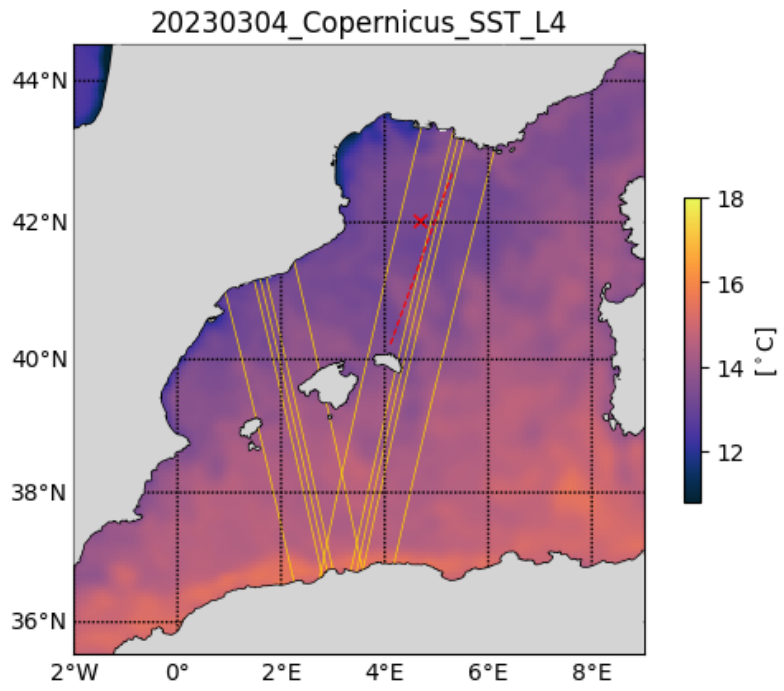
Type here.





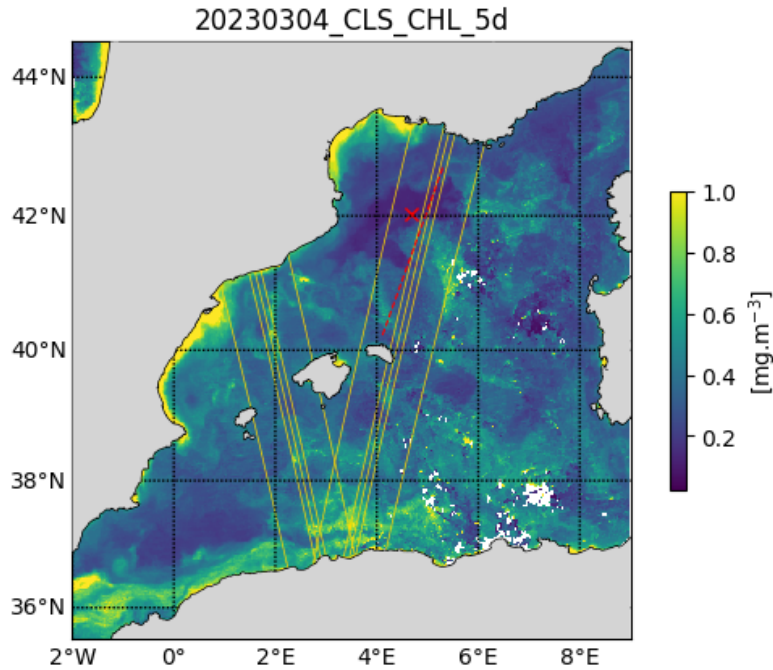
### 2.3 Chlorophyll analysis

Type here.



## 2.4 Eulerian/Lagrangian analysis

Type here.



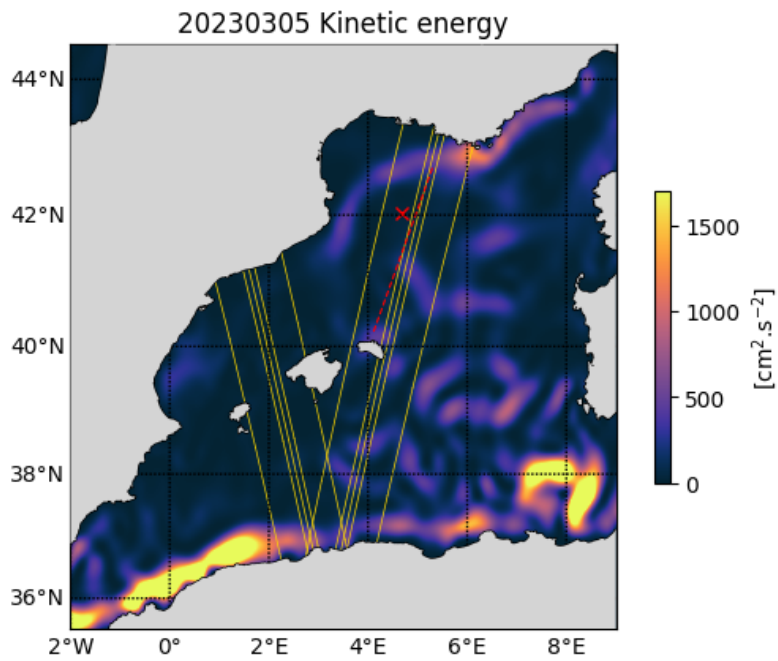
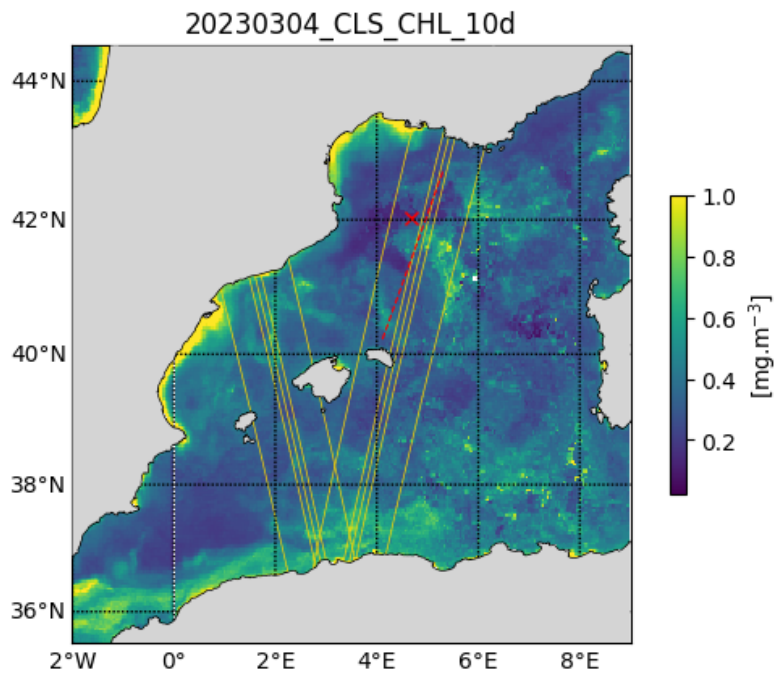
## 2.5 Other analysis

Type here.

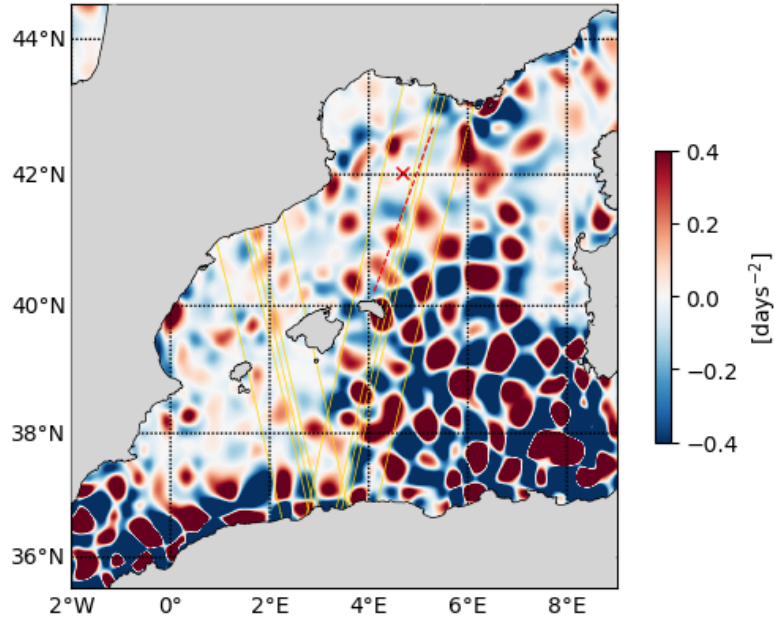
### Acknowledgments

Example:

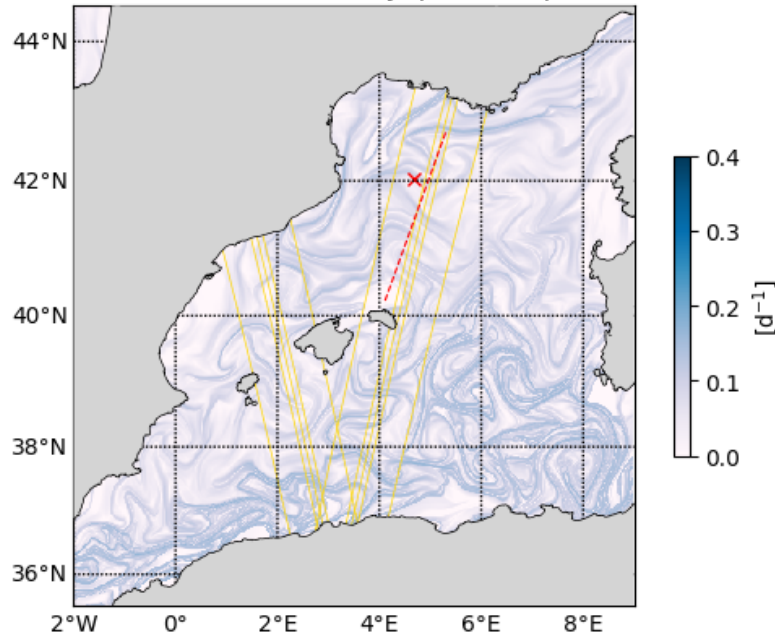
The altimetry data are the AVISO Mediterranean regional product: <http://www.aviso.altimetry.fr/index.php?id=home>. The derived currents are processed by SPASSO to derive Eulerian and Lagrangian diagnostics of ocean circulation: OkuboWeiss parameter, particle retention time and advection, Lagrangian Coherent Structures. CLS provided the SST and surface CHL concentration composite products. Sea surface temperature (level 3 and 4, 1 km resolution) and chlorophyll concentration (level 3, 1km resolution, MODISAqua and NPPVIIRS sensors combined (after May 27, 2017) into a new product called MULTI) have been provided by CMEMS Copernicus Marine Environment Monitoring Service (<http://marine.copernicus.eu>). Another SST product (level 4, composite, 1 km resolution) is provided by the Jet Propulsion Laboratory (JPL), Pasadena, CA.



20230305 Okubo-Weiss parameter

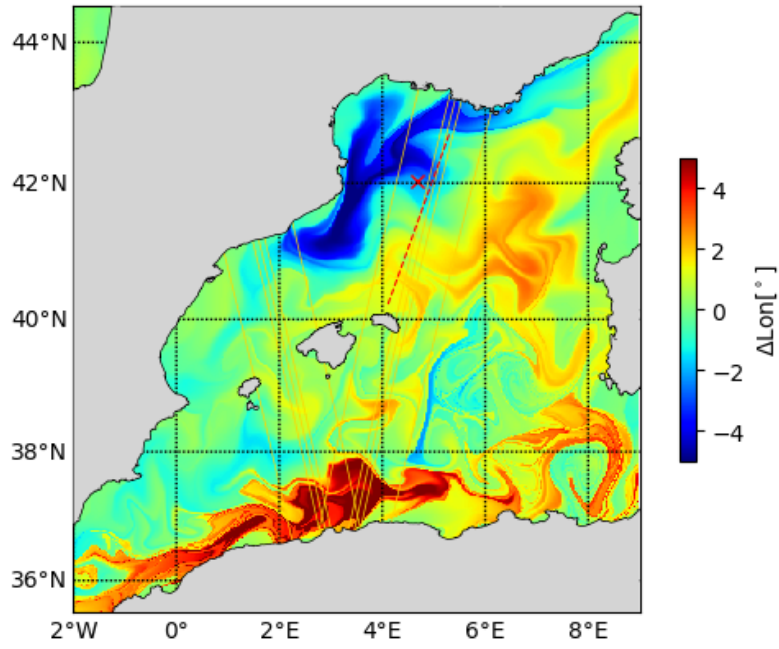


20230305 Finite Time Lyapunov Exponent

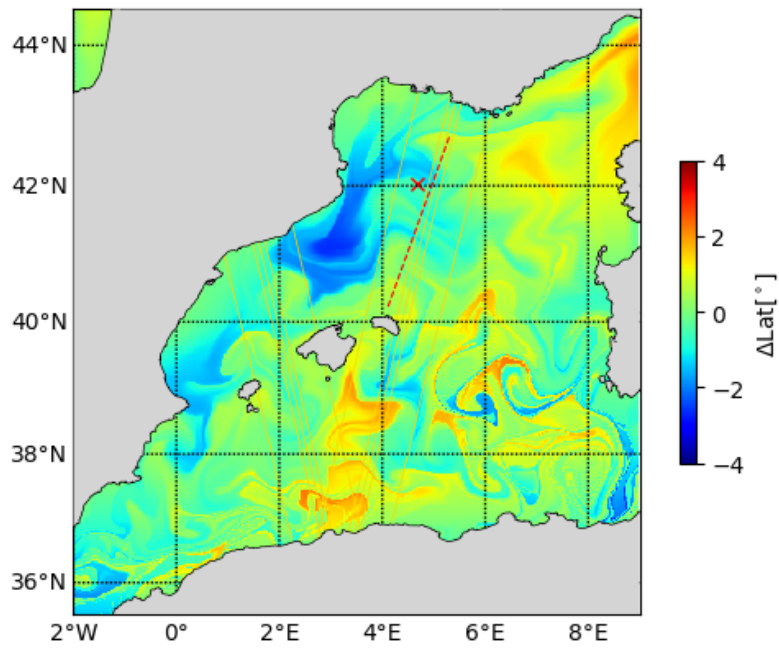




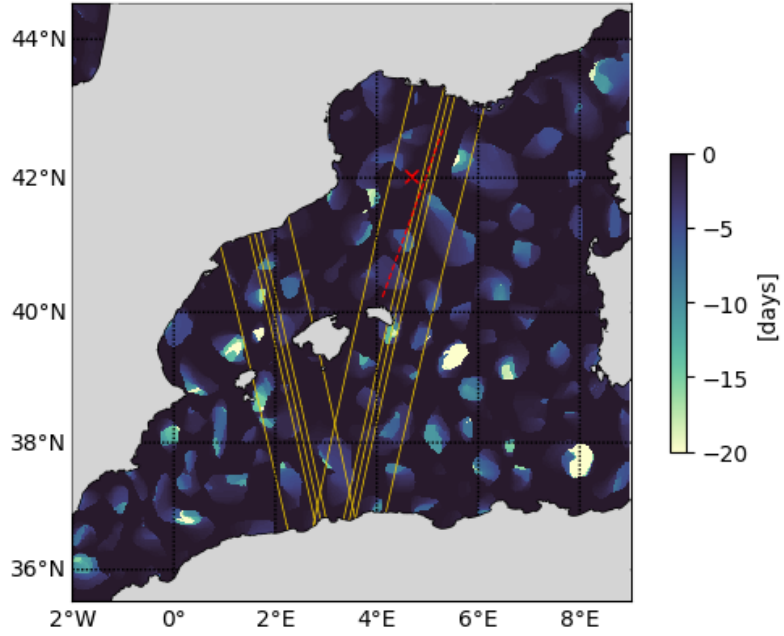
20230305 LonAdv



20230305 LatAdv



20230305 Retention parameter



20230305 Tracer advection

