

[BIOSWOT-Med]: SPASSO Images Analysis

L. Rousselet, A.M. Doglioli

March 1, 2023

Executive Summary

Type here your executive summary

1 Ongoing operations and upcoming stations

SWOT passing time (UTC) over:

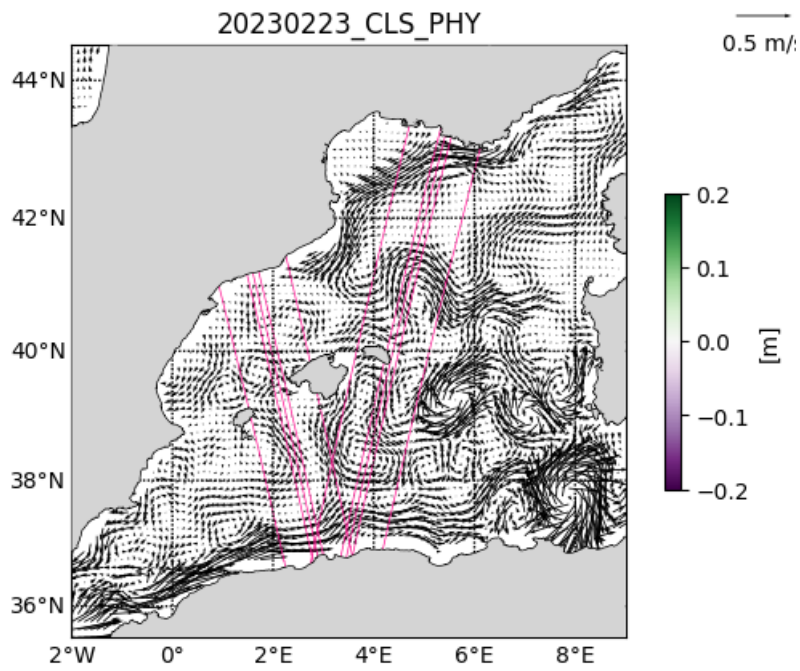
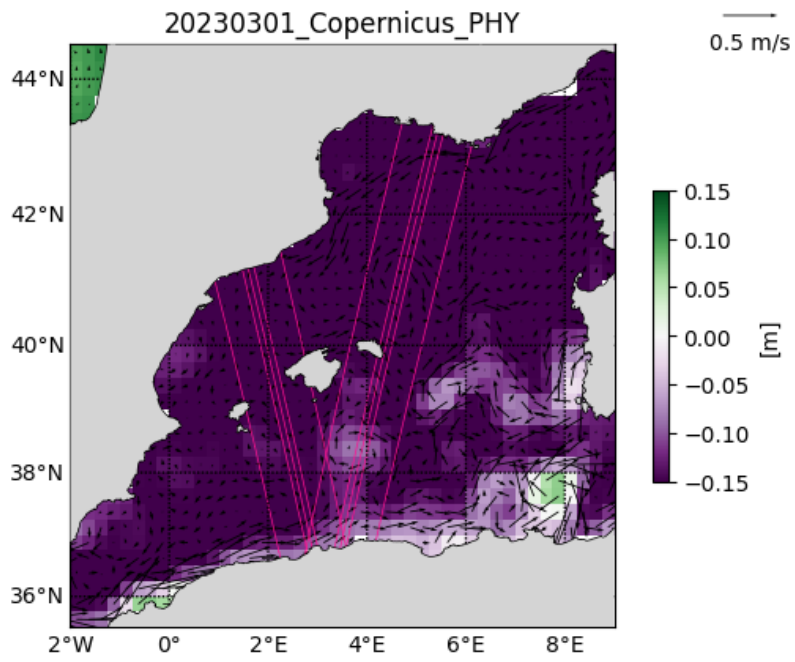
43°N - 5°E Asc 42.7°N - 4.8°E Asc
:----- :-----
2023-03-01 04:44:36 2023-03-01 04:44:36
2023-03-02 04:35:14 2023-03-02 04:35:14
2023-03-03 04:25:51 2023-03-03 04:25:51

Type here.

2 Daily figures analysis

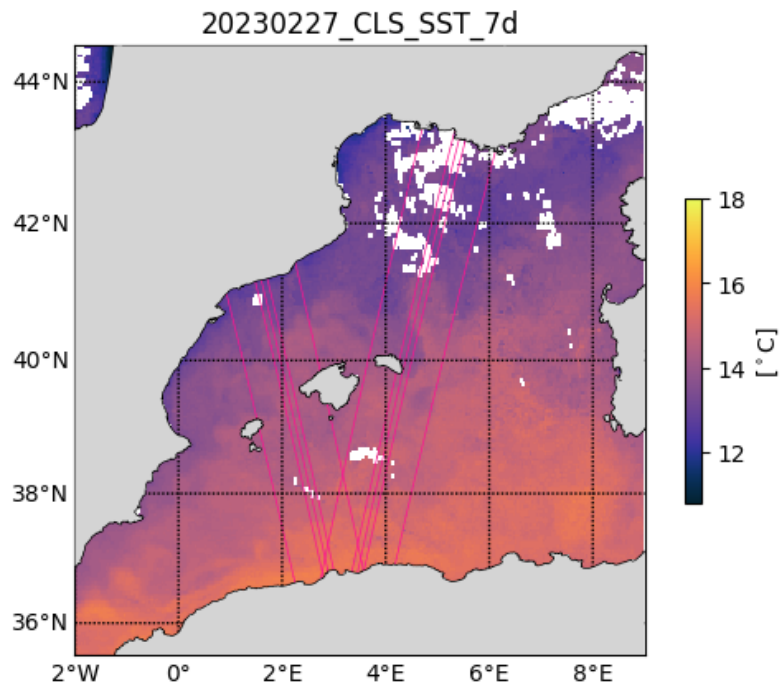
2.1 Altimetry, derived currents

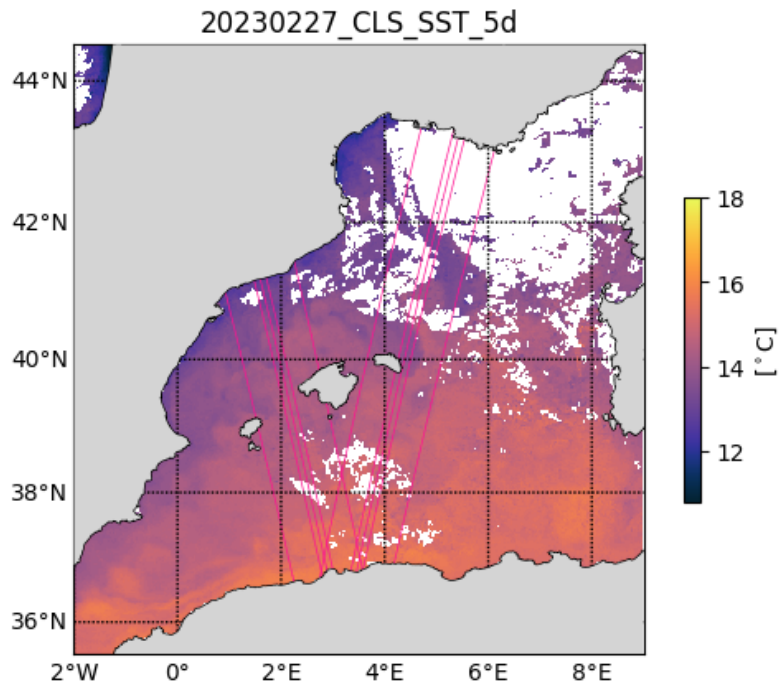
Type here.



2.2 SST analysis

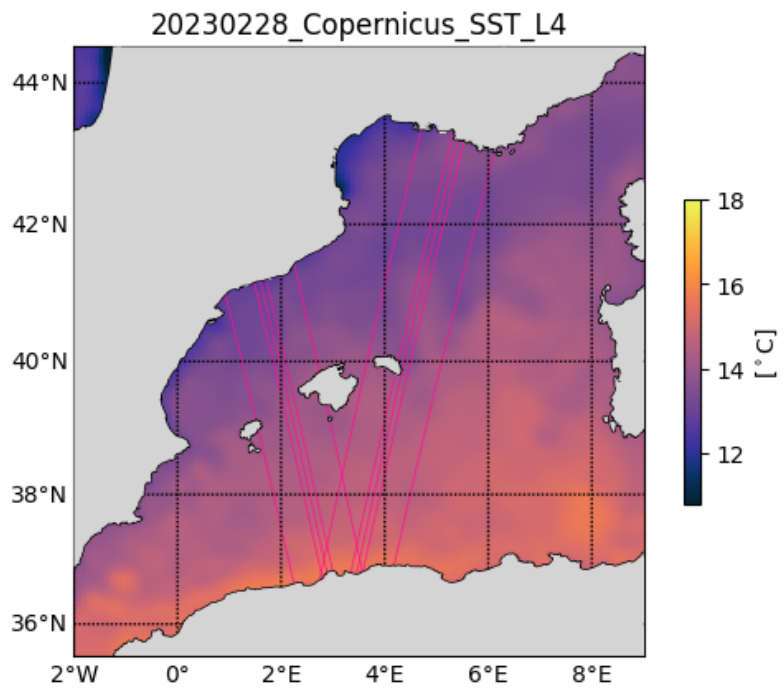
Type here.





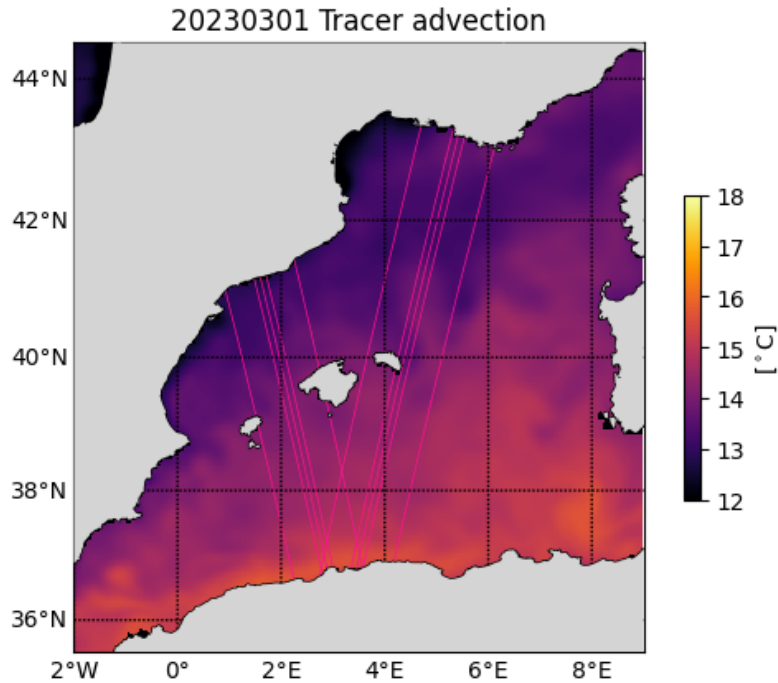
2.3 Chlorophyll analysis

Type here.



2.4 Eulerian/Lagrangian analysis

Type here.



2.5 Other analysis

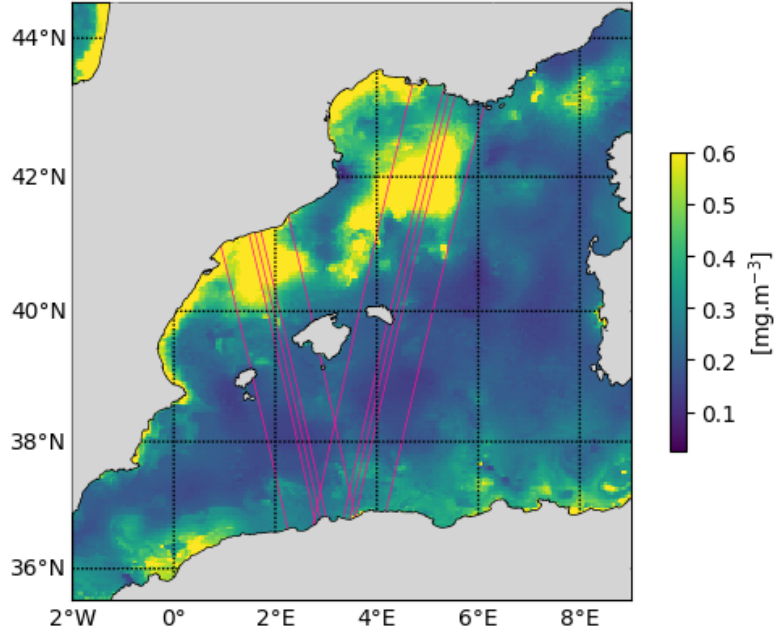
Type here.

Acknowledgments

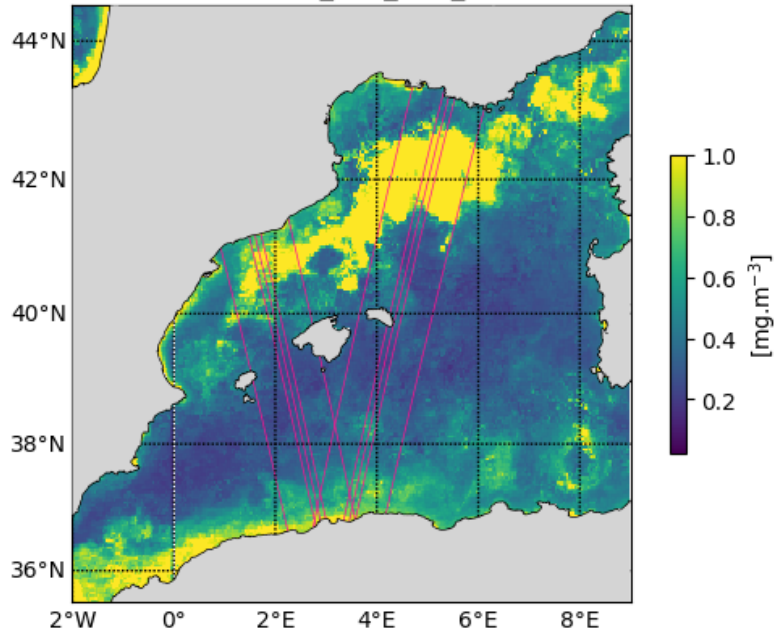
Example:

The altimetry data are the AVISO Mediterranean regional product: <http://www.aviso.altimetry.fr/index.php?id=1>. The derived currents are processed by SPASSO to derive Eulerian and Lagrangian diagnostics of ocean circulation: OkuboWeiss parameter, particle retention time and advection, Lagrangian Coherent Structures. CLS provided the SST and surface CHL concentration composite products. Sea surface temperature (level 3 and 4, 1 km resolution) and chlorophyll concentration (level 3, 1km resolution, MODISAqua and NPPVIIRS sensors combined (after May 27, 2017) into a new product called MULTI) have been provided by CMEMS Copernicus Marine Environment Monitoring Service (<http://marine.copernicus.eu>). Another SST product (level 4, composite, 1 km resolution) is provided by the Jet Propulsion Laboratory (JPL), Pasadena, CA.

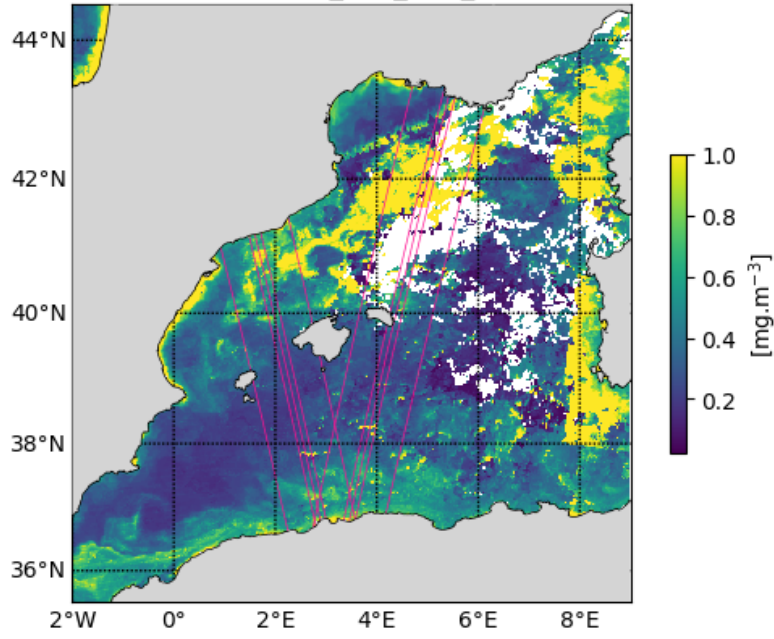
20230227_Copernicus_CHL_L4



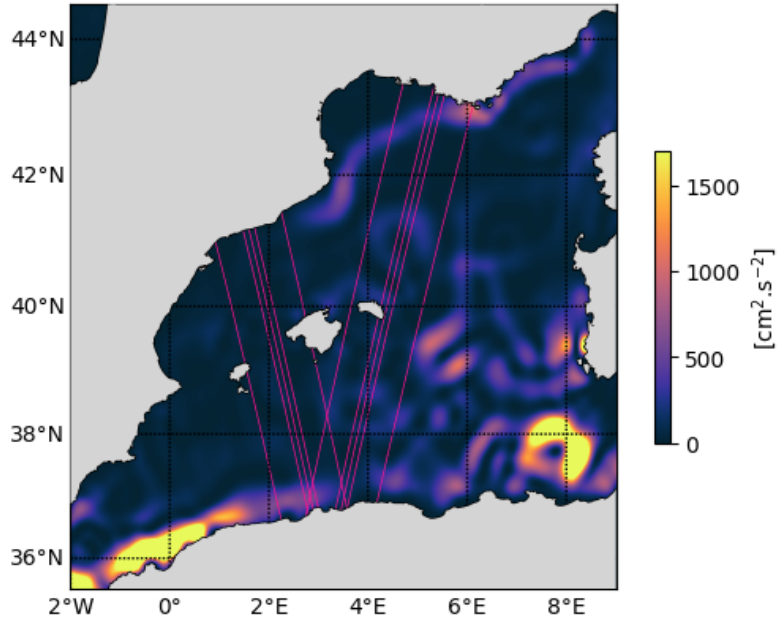
20230228_CLS_CHL_10d



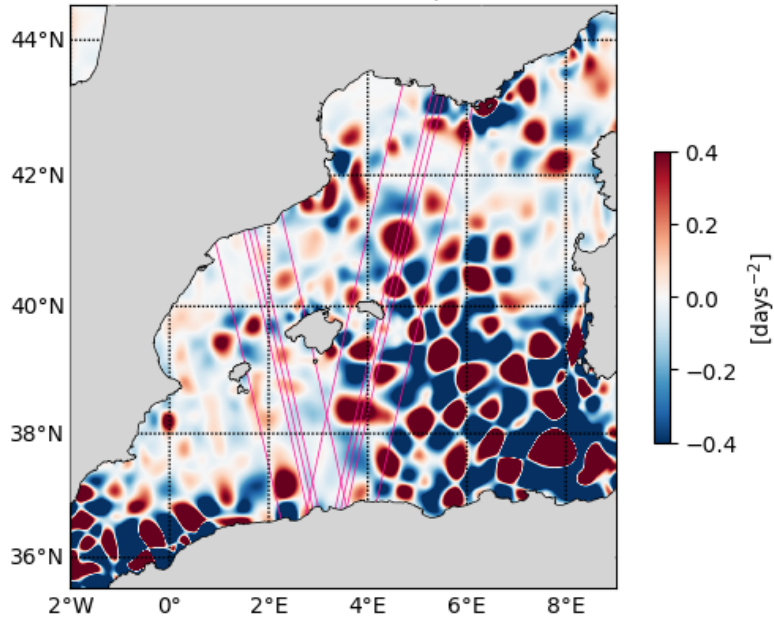
20230228_CLS_CHL_5d



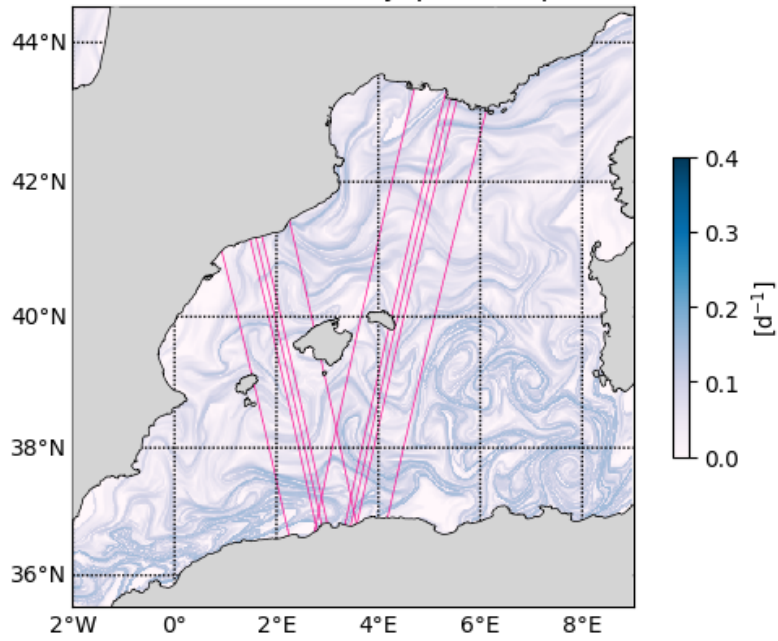
20230301 Kinetic energy



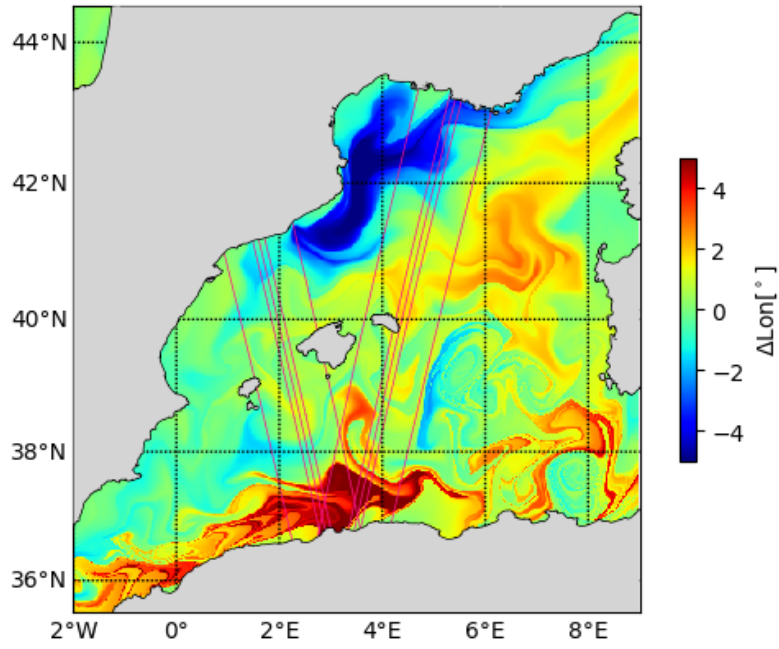
20230301 Okubo-Weiss parameter



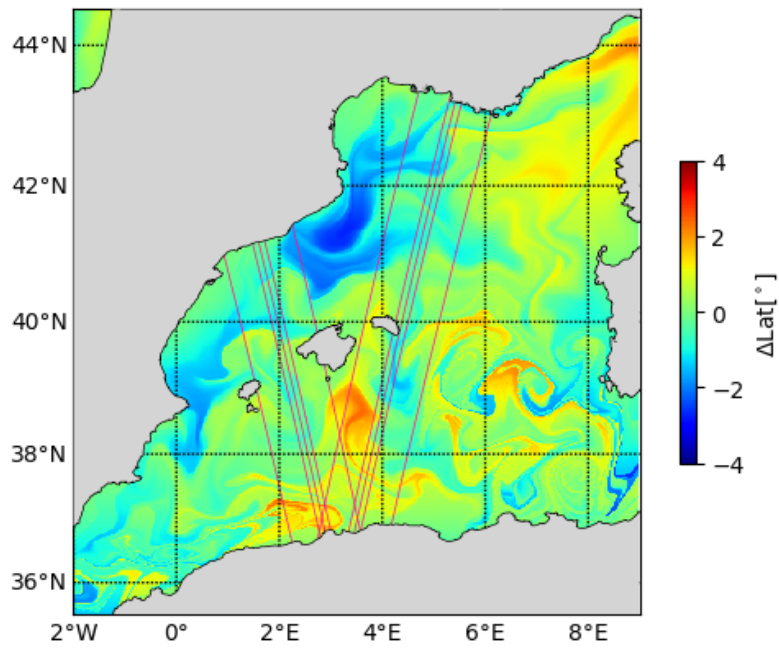
20230301 Finite Time Lyapunov Exponent



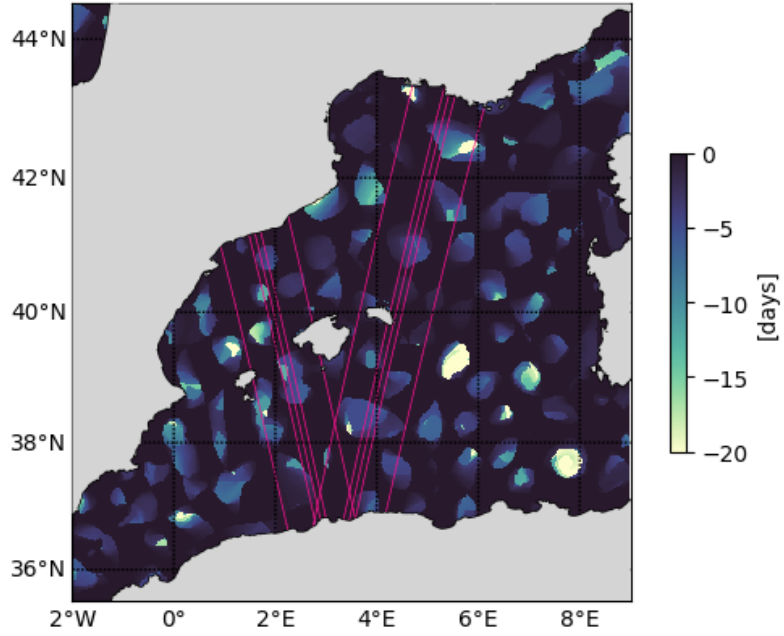
20230301 LonAdv



20230301 LatAdv



20230301 Retention parameter



20230301 Tracer advection

